



# Technical Memorandum

## First Quarter 2012 Monitoring Summary

### National Aeronautics and Space Administration

#### Jet Propulsion Laboratory, Pasadena, California

Final

April 2012

This technical memorandum summarizes the results of the first quarter 2012 groundwater sampling event completed as part of the groundwater monitoring program at the National Aeronautics and Space Administration (NASA) Jet Propulsion Laboratory (JPL).

## INTRODUCTION

During the first quarter 2012 sampling event, groundwater samples were collected from 23 JPL monitoring wells (MWs), both on- and off-facility, and analyzed for volatile organic compounds (VOCs), total chromium, hexavalent chromium [Cr(VI)], and perchlorate. Figure 1 shows the locations of the groundwater monitoring wells.

Groundwater samples were shipped to Alpha Analytical Services, Inc., in Sparks, Nevada, and Columbia Analytical Services (CAS) in Simi Valley, California, for chemical analysis. Alpha Analytical Services, Inc. and CAS are certified by the California Department of Public Health (DPH). Sample collection procedures and sample analyses were conducted in accordance with the approved *Work Plan for Performing a Remedial Investigation/Feasibility Study*.<sup>1</sup> No reported data were rejected for non-compliance with method requirements during the course of validation and no reported data were deemed unusable.

Table 1 summarizes analytical results for VOCs and perchlorate and Table 2 summarizes analytical results for metals during the most recent four quarters. Table 3 summarizes VOC and perchlorate concentrations in production wells located near the JPL facility during the most recent four quarters. The tentatively identified compound (TIC) carbon disulfide was detected in MW-20 (Screen 5 [2.2 µg/L]) during the first quarter 2012. The TIC results are presented in Table 4.

Additional figures are included in this technical memorandum summarizing the results from the first quarter 2012 sampling event. Figure 2 shows the lateral extent of carbon tetrachloride concentrations in groundwater and Figure 3 includes a cross-section detailing the horizontal and vertical extent of carbon tetrachloride. Figure 4 shows the lateral extent of perchlorate concentrations in groundwater, and Figure 5 includes a cross-section detailing the horizontal and vertical extent of perchlorate in groundwater. Figure 6 shows the lateral extent of tetrachloroethene (PCE) concentrations in groundwater. Figure 7 shows the lateral extent of trichloroethene (TCE) concentrations in groundwater and Figure 8 shows groundwater elevation contours and groundwater flow directions.

The groundwater monitoring wells have been grouped into four categories:

- On-facility source area wells (MW-7, MW-13, MW-16, and MW-24);
- Other on-facility wells (MW-6, MW-8, MW-11, MW-22, and MW-23);
- Perimeter off-facility wells (MW-3, MW-4, MW-5, MW-10, MW-12, MW-14, and MW-15); and
- Off-facility wells (MW-17, MW-18, MW-19, MW-20, MW-21, MW-25, and MW-26).

<sup>1</sup> Ebasco. 1993. *Work Plan for Performing a Remedial Investigation/Feasibility Study*, National Aeronautics and Space Administration Jet Propulsion Laboratory, Pasadena, California. December.

Well MW-2 has not been sampled for the groundwater monitoring program since it was replaced with well MW-14.

### ON-FACILITY SOURCE AREA WELLS

On-facility source area wells consist of wells that have historically contained the highest concentration of site-related chemicals. This group of wells is located within the JPL facility (on-facility) and consists of monitoring wells MW-7, MW-13, MW-16, and MW-24.

The source area treatment system has been operating since 2005 and addresses groundwater beneath the JPL facility which has historically contained the highest concentrations of perchlorate and VOCs (i.e., the source area). Operation of the source area treatment system appears to have resulted in a significant reduction of chemicals of interest in wells MW-7, MW-16 and MW-24, which are located within the treatment zone. Additional details regarding chemical concentrations in these wells are discussed below.

#### PERCHLORATE ANALYTICAL RESULTS

- During the first quarter 2012 sampling event, concentrations of perchlorate in excess of the state maximum contaminant level (MCL) (6.0 micrograms per liter [ $\mu\text{g/L}$ ]) were reported in samples collected from wells MW-13 (349  $\mu\text{g/L}$ ) and MW-24 (Screen 2 [33.3  $\mu\text{g/L}$ ]).
- Perchlorate was detected in MW-7 at an estimated concentration of 3.6J  $\mu\text{g/L}$  and MW-24 (Screen 1 [5.8  $\mu\text{g/L}$ ]) below the state MCL of 6.0  $\mu\text{g/L}$ .
- Perchlorate concentrations increased slightly from their respective last sampling date to the first quarter 2012 in MW-7 (2.0  $\mu\text{g/L}$  to 3.6J  $\mu\text{g/L}$ ) and MW-24 (Screen 1 [4.6  $\mu\text{g/L}$  to 5.8  $\mu\text{g/L}$ ]).
- Perchlorate concentrations decreased from their respective last sampling date to the first quarter 2012 in MW-13 (487  $\mu\text{g/L}$  to 349  $\mu\text{g/L}$ ) and MW-24 (Screen 2 [38.5  $\mu\text{g/L}$  to 33.3  $\mu\text{g/L}$ ]).
- Perchlorate concentrations in MW-16 and MW-24 (Screen 3) were non-detect during the first quarter 2012, with a reporting limit of 1.0  $\mu\text{g/L}$ . Note: MW-24 (Screens 4 and 5) were not sampled this quarter.

#### VOC ANALYTICAL RESULTS

- During the first quarter 2012, carbon tetrachloride was detected above the state MCL (0.5  $\mu\text{g/L}$ ) in MW-13 (1.5  $\mu\text{g/L}$ ) and MW-24 (Screen 2 [1.0  $\mu\text{g/L}$ ]). These two detections were the only carbon tetrachloride detections in the on-facility source area wells.
- TCE was not detected in any of the on-facility source area wells during the first quarter 2012 with a reporting limit of 0.5  $\mu\text{g/L}$ .
- During the first quarter 2012, PCE was detected in MW-13 at 0.6  $\mu\text{g/L}$ , which is below the state and federal MCL of 5.0  $\mu\text{g/L}$ .

#### OTHER NOTABLE ANALYTICAL RESULTS

- During the first quarter 2012, Cr(VI)<sup>2</sup> was detected below the state MCL of 50.0  $\mu\text{g/L}$  in MW-13 (8.0J  $\mu\text{g/L}$ ).

---

<sup>2</sup> On July 27, 2011, the Office of Environmental Health Hazard Assessment (OEHHA) established its Public Health Goal (PHG) for Cr(VI) at a concentration of 0.02  $\mu\text{g/L}$ . The PHG represents a *de minimis* lifetime cancer risk from exposure to Cr(VI) in drinking water, based on studies in laboratory animals.

- During the first quarter 2012, total chromium was detected at MW-13 (5.8 µg/L) below the state MCL of 50.0 µg/L.

#### OTHER ON-FACILITY WELLS

This well group consists of monitoring wells MW-6, MW-8, MW-11, MW-22, and MW-23. These wells are located on the JPL facility but outside the source area.

#### PERCHLORATE ANALYTICAL RESULTS

- During the first quarter 2012 sampling event, perchlorate in excess of the state MCL (6.0 µg/L) was detected in MW-23 (Screen 1 [35.5 µg/L]).
- Perchlorate was detected in MW-6 (4.0 µg/L), MW-22 (Screens 1 [4.4 µg/L], 2 [3.2 µg/L] and 3 [4.5 µg/L]) and MW-23 (Screens 2 [5.3 µg/L] and 3 [2.1 µg/L]) below the state MCL of 6.0 µg/L.
- Perchlorate concentrations increased slightly from their respective last sampling date to the first quarter 2012 in MW-6 (2.1 µg/L to 4.0 µg/L), MW-22 (Screens 2 [1.9 µg/L to 3.2 µg/L] and 3 [3.1 µg/L to 4.5 µg/L]) and MW-23 (Screens 2 [2.8 µg/L to 5.3 µg/L] and 3 [1.3 µg/L to 2.1 µg/L]).
- Perchlorate concentrations decreased from their respective last sampling event to the first quarter 2012 in MW-22 (Screen 1 [85.2 µg/L to 4.4 µg/L]) and MW-23 (Screen 1 [103 µg/L to 35.5 µg/L]).
- The perchlorate concentration of 4.4 µg/L in MW-22 (Screen 1) is down from the highest detection for this well screen interval (98.7 µg/L third quarter 2011). Prior to 2011, the perchlorate concentrations in MW-22 (Screen 1) had been either non-detect or below the state MCL (6.0 µg/L) with only two detections that exceeded the state MCL (third quarter 1998 [6.4 µg/L], first quarter 1999 [6.4 µg/L]). However perchlorate was detected in MW-22 (Screen 1) during all four quarters of 2011 above the MCL (22.9, 40.1, 98.7, and 85.2 µg/L). Perchlorate results in MW-22 (Screen 1) will continue to be closely evaluated during subsequent sampling events. MW-22 is outside the capture zone of the Source Area Treatment System, but within the capture zone of the Monk Hill Treatment System (MHTS).
- Historically, the perchlorate concentrations in MW-23 (Screens 1 through 5) have been non-detect with an occasional detection below the state MCL (6.0 µg/L), and some isolated perchlorate detections that exceeded the state MCL in MW-23 (Screens 1, 2 and 5) between 1997 and 2008. The detections of 28.3 µg/L, 30.4 µg/L, 302 µg/L, 97.8 µg/L, 9.7 µg/L, 103 µg/L and 35.5 µg/L (third quarter 2010 through first quarter 2012, respectively) in Screen 1 are the only detections in MW-23 above the state MCL (6.0 µg/L) since the first quarter 2008. Perchlorate results in MW-23 will continue to be closely evaluated during subsequent sampling events. MW-23 is outside the capture zone of the Source Area Treatment System, but within the capture zone of the MHTS.
- During the first quarter 2012, perchlorate was not detected in MW-8 and MW-11 (Screens 1 through 4) with a reporting limit of 1.0 µg/L.

#### VOC ANALYTICAL RESULTS

- Carbon tetrachloride was not detected in any of the other on-facility wells during the first quarter 2012 with a reporting limit of 0.5 µg/L.

- During the first quarter 2012, TCE was detected below the state and federal MCL of 5.0 µg/L in MW-6 (2.8 µg/L) and MW-23 (Screen 2 [1.4 µg/L]).
- PCE was detected below the state and federal MCL for PCE (5.0 µg/L) in wells MW-6 (1.2 µg/L) and MW-22 (Screen 1 [1.6 µg/L]).

#### **OTHER NOTABLE ANALYTICAL RESULTS**

- During the third quarter of 2011, Cr(VI) was not detected in any of the other on-facility wells with a reporting limit of 10.0 µg/L.
- During the first quarter of 2012, total chromium was not detected in any of the other on-facility wells with a reporting limit of 5.0 µg/L.

#### **PERIMETER OFF-FACILITY WELLS**

The perimeter off-facility wells are located near the JPL fence line along the perimeter of the property. This group of wells consists of MW-3, MW-4, MW-5, MW-10, MW-12, MW-14, and MW-15.

#### **PERCHLORATE ANALYTICAL RESULTS**

- During the first quarter 2012 sampling event, concentrations of perchlorate in excess of the state MCL (6.0 µg/L) were reported in a sample collected from well MW-4 (Screen 2 [157] µg/L), MW-12 (Screen 2 [9.3 µg/L]) and MW-14 (Screen 3 [6.4 µg/L]).
- Perchlorate was detected below the state MCL of 6.0 µg/L in MW-10 (1.0 µg/L), MW-12 (Screens 3, 4 and 5 [5.5 µg/L, 5.2 µg/L and 3.1 µg/L, respectively]) and MW-14 (Screens 1, 2 and 4 [4.2 µg/L, 4.1 µg/L and 5.4 µg/L, respectively]).
- Perchlorate concentrations increased from their respective last sampling date to the first quarter 2012 in MW-4 (Screen 2 [46.8 µg/L to 157] µg/L), MW-10 (non-detect to 1.0 µg/L), and MW-12 (Screens 2 through 5 [5.3 µg/L to 9.3 µg/L, 4.4 µg/L to 5.5 µg/L, 2.9 µg/L to 5.2 µg/L and an estimated concentration of 2.0] µg/L to 3.1 µg/L, respectively]) and MW-14 (Screens 1 through 4 [2.3 µg/L to 4.2 µg/L, 1.5 µg/L to 4.1 µg/L, 3.8 µg/L to 6.4 µg/L and 3.8 µg/L to 5.4 µg/L, respectively]).
- Perchlorate concentrations decreased from their last sampling event to the first quarter 2012 in MW-3 (Screen 4 [1.6 µg/L to non-detect]).
- The estimated perchlorate concentration of 157] µg/L in MW-4 (Screen 2) marks the highest detection for this well screen interval since it was first sampled in 1996. Historically, the perchlorate concentrations in MW-4 (Screen 2) have been below the state MCL (6.0 µg/L) since the first quarter 2002 with three exceptions: 6.6 µg/L, 9.0 µg/L and 6.1 µg/L (second and third quarters of 2003 and third quarter 2005, respectively). The detections of 23.0 µg/L (first quarter 2011), 31.7 µg/L (second quarter 2011), 17.6 µg/L (third quarter 2011), 46.8 µg/L (fourth quarter 2011) and 157 µg/L (first quarter 2012) are the only detections in MW-4 (Screen 2) above the state MCL (6.0 µg/L) since the third quarter 2005. Perchlorate results in MW-4 will continue to be closely evaluated during subsequent sampling events. MW-4 is within the capture zone of the MHTS.
- Perchlorate was not detected in MW-3 (Screens 2, 3 and 4), MW-4 (Screens 1 and 3), MW-5, MW-12 (Screen 1) and MW-14 (Screen 5) with a reporting limit of 1.0 µg/L.

#### **VOC ANALYTICAL RESULTS**

- During the first quarter 2012, carbon tetrachloride was detected at a concentration in excess of the state MCL (0.5 µg/L) in MW-12 (Screens 3 [1.3 µg/L], 4 [1.2 µg/L] and 5 [0.7 µg/L]). No other carbon tetrachloride detections occurred in the perimeter off-facility wells during the first quarter 2012.
- During the first quarter 2012, TCE was detected above the state and federal MCL (5.0 µg/L) in well MW-14 (Screen 2 [6.7 µg/L]). Historically, TCE detections have been present in MW-14 (Screen 2) and concentrations have remained above the state and federal MCL (5.0 µg/L) since the third quarter 2007, with the exception of the fourth quarter 2010 and the second quarter 2011. TCE was detected below the state and federal MCL (5.0 µg/L) in MW-14 Screens 1 (2.7 µg/L) and 3 (1.3 µg/L). No other TCE detections occurred in the perimeter off-facility wells during the first quarter 2012.
- During the first quarter 2012, PCE was detected below the state and federal MCL of 5.0 µg/L in MW-4 (Screen 2 [0.6 µg/L]) and MW-14 (Screen 2 [0.6 µg/L]). No other PCE detections occurred in the perimeter off-facility wells during the first quarter 2012.

#### **OTHER NOTABLE ANALYTICAL RESULTS**

- During the first quarter 2012, Cr(VI) was not detected in any of the perimeter off-facility wells with a reporting limit of 10.0 µg/L.
- During the third quarter 2011, total chromium was not detected in any of the other on-facility wells with a reporting limit of 5.0 µg/L.

#### **OFF-FACILITY WELLS**

The off-facility wells consist of monitoring wells MW-17, MW-18, MW-19, MW-20, MW-21, MW-25, and MW-26. These wells are located near and downgradient of the two off-facility treatment plants: MHTS and LAWC treatment system. Daily operation of the MHTS began in February 2012. Operation of the LAWC system began in July 2004.

#### **PERCHLORATE ANALYTICAL RESULTS**

- During the first quarter 2012 sampling event, concentrations of perchlorate in excess of the state MCL (6.0 µg/L) were reported in samples collected from wells MW-17 (Screens 2 [90.1 µg/L] and 3 [7.3 µg/L]), MW-18 (Screens 3 [126 µg/L] and 4 [16.5 µg/L]), MW-19 (Screen 2 [7.1 µg/L]), MW-20 (Screens 3, 4 and 5 [12.6 µg/L, 123 µg/L, and 56.5 µg/L, respectively]) and MW-25 (Screens 1 through 5 [11.6 µg/L, 16.8 µg/L, 11.3 µg/L, 9.8 µg/L, and 54.8 µg/L, respectively]).
- Perchlorate was detected below the state MCL of 6.0 µg/L in MW-17 (Screen 4 [1.8 µg/L]), MW-19 (Screens 3 through 5 [4.0 µg/L, 3.8 µg/L and 3.1 µg/L, respectively]), MW-20 (Screens 1 [1.7 µg/L] and 2 [5.2 µg/L]), MW-21 (Screens 1 through 5 [3.4 µg/L, 2.9 µg/L, 3.8 µg/L, 2.9 µg/L, and 3.0 µg/L, respectively]) and MW-26 (Screen 1 [3.9 µg/L]).
- Perchlorate concentrations increased from their respective last sampling date to the first quarter 2012 in MW-17 (Screens 2 [52.1 µg/L to 90.1 µg/L] and 4 [non-detect to 1.8 µg/L]), MW-18 (Screens 3 [110 µg/L to 126 µg/L] and 4 [11.6 µg/L to 16.5 µg/L]), MW-19 (Screens 2 through 5 [4.1 µg/L to 7.1 µg/L], [3.2 µg/L to 4.0 µg/L], [2.3 µg/L to 3.8 µg/L] and [2.0 µg/L to 3.1 µg/L], respectively), MW-20 (Screens 1 through 5 [non-detect to 1.7 µg/L], [2.5 µg/L to 5.2 µg/L], [non-detect to 12.6 µg/L], [non-detect to 123 µg/L] and [non-detect to 56.5 µg/L], respectively), MW-21 (Screens 1 through 5 [2.1 µg/L to 3.4 µg/L], [1.6 µg/L to 2.9 µg/L], [2.1

µg/L to 3.8] µg/L], [2.0 µg/L to 2.9] µg/L] and [1.9 µg/L to 3.0] µg/L], respectively), MW-25 (Screens 1 through 5 [7.8 µg/L to 11.6] µg/L], [12.6 µg/L to 16.8] µg/L], [8.5 µg/L to 11.3] µg/L], [7.0 µg/L to 9.8] µg/L] and [non-detect to 54.8] µg/L], respectively) and MW-26 (Screen 1 [2.3 µg/L to 3.9] µg/L]).

- Perchlorate concentrations decreased slightly from their respective last sampling event to the first quarter 2012 in MW-17 (Screen 3 [7.8 µg/L to 7.3] µg/L]).
- Prior to the first quarter 2003, the perchlorate concentrations in MW-17 (Screen 2) were non-detect. From the first quarter 2003 through the fourth quarter 2008 all detections were above the state MCL with the exception of three quarters (first and second quarters 2003 and third quarter 2008). Since the first quarter 2009, perchlorate levels have been below the state MCL (6.0 µg/L) until the detection of 24.1 µg/L during the first quarter 2011. The estimated concentration of 90.1 µg/L during the first quarter 2012 is the highest reported concentration for MW-17 (Screen 2).
- Since the third quarter 2005, the perchlorate concentrations in MW-18 (Screen 3) have exceeded the state MCL (6.0 µg/L) with the exception of one quarter (first quarter 2007 [non-detect]). The concentration of 144 µg/L during the third quarter 2011 is the highest reported concentration for MW-18 (Screen 3) since the well was installed.
- Historically, the perchlorate concentrations in MW-20 (Screen 3) have been non-detect with four detections (an estimated detection first quarter 2004, third quarter 2008, first quarter 2009 and first quarter 2010) below the state MCL (6.0 µg/L). The concentration of 12.6 µg/L during the first quarter 2012 is the highest reported concentration for MW-20 (Screen 3). Perchlorate results in MW-20 (Screen 3) will continue to be closely evaluated during subsequent sampling events.
- The estimated concentration of 123 µg/L during the first quarter 2012 is the second highest reported concentration for MW-20 (Screen 4). Perchlorate results in MW-20 (Screen 4) will continue to be closely evaluated during subsequent sampling events.
- The concentration of 56.5 µg/L during the first quarter 2012 is the highest reported concentration for MW-20 (Screen 5). Perchlorate results in MW-20 (Screen 4) will continue to be closely evaluated during subsequent sampling events.
- Concentrations of perchlorate were not detected in MW-18 (Screens 2 and 5) and MW-26 (Screen 2).

## VOC ANALYTICAL RESULTS

- During the first quarter 2012, carbon tetrachloride was detected at a concentration in excess of the state MCL (0.5 µg/L) in MW-18 (Screens 3 [25.0 µg/L] and 4 [1.6 µg/L]). No other carbon tetrachloride detections occurred in the off-facility wells during the first quarter 2012. Since the first quarter 2005, the carbon tetrachloride concentrations in MW-18 (Screen 3) have exceeded the state MCL (0.5 µg/L).
- TCE was detected in seven off-facility wells during the first quarter 2012, including MW-17 (Screen 4), MW-18 (Screens 3 and 4), MW-19 (Screen 2), MW-20 (Screen 2), MW-21 (Screen 3) and MW-25 (Screen 1). The detection of 5.3 µg/L in MW-25 (Screen 1) was the only detection above the state and federal MCL (5.0 µg/L).
- PCE was detected in four off-facility wells: MW-18 (Screen 4), MW-19 (Screen 4 and 5), MW-21 (Screens 2 through 5) and MW-26 (Screen 1); however, no detections exceeded the state and federal MCL (5.0 µg/L) during the first quarter 2012. PCE concentrations in MW-21 (Screens 2 and 3) have typically been present above the state and federal MCL (5.0 µg/L) since the second quarter 2006.

## **OTHER NOTABLE ANALYTICAL RESULTS**

- During the first quarter 2012, Cr(VI) was not detected in any of the off-facility wells with a reporting limit of 10.0 µg/L.
- During the first quarter 2012, total chromium was detected at MW-25 (Screens 2 [5.0 µg/L] and 3 [5.1 µg/L]) below the state MCL of 50.0 µg/L.

## **ALL WELL CATEGORIES (OTHER RESULTS)**

- The TIC carbon disulfide was detected during the first quarter 2012 sampling event in a very low concentration in one well. The TIC results are presented in Table 4.
- Comparing the fourth quarter 2011 to the first quarter 2012, groundwater levels decreased an average of approximately 5.02 ft.
- Groundwater level measurements collected during the first quarter 2012 indicate that groundwater gradients and flow directions are generally consistent with previous observations (see Figure 8).

## **ATTACHMENTS**

Attachments to this technical memorandum include the following:

- Attachment 1: Quality Assurance/Quality Control Summary
  - Attachment 2: Data Validation Reports (Summary Sheets)
  - Attachment 3: Laboratory Analytical Reports (Summary Sheets)
  - Attachment 4: Field Logs
  - Attachment 5: Water Level Measurements
  - Attachment 6: Time-Series Concentration Plots
  - Attachment 7: Tables 1A, 2A and 3A (Historical Perchlorate, VOCs and Metals from 1996 to present)
-

## FIGURES



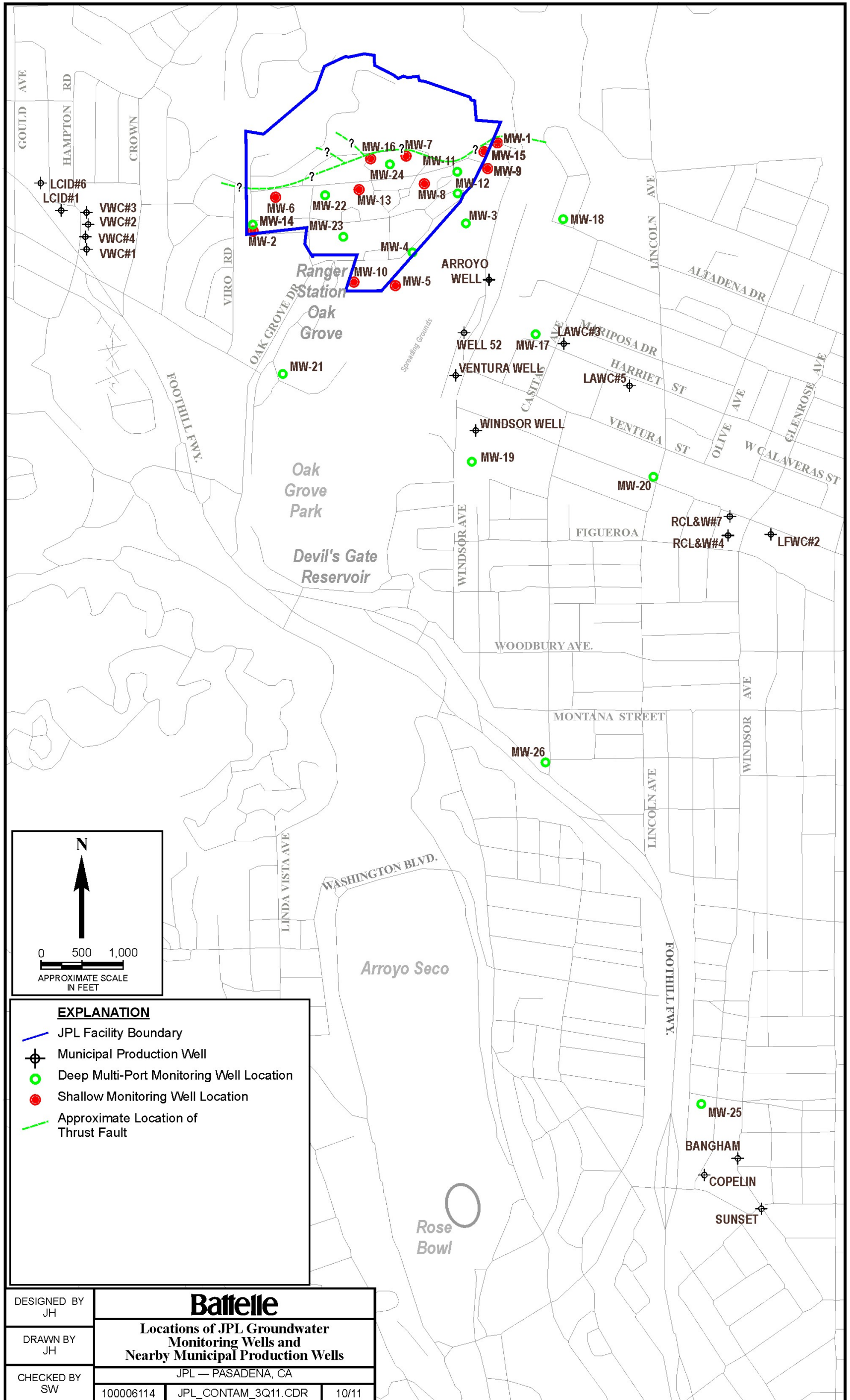


Figure 1.

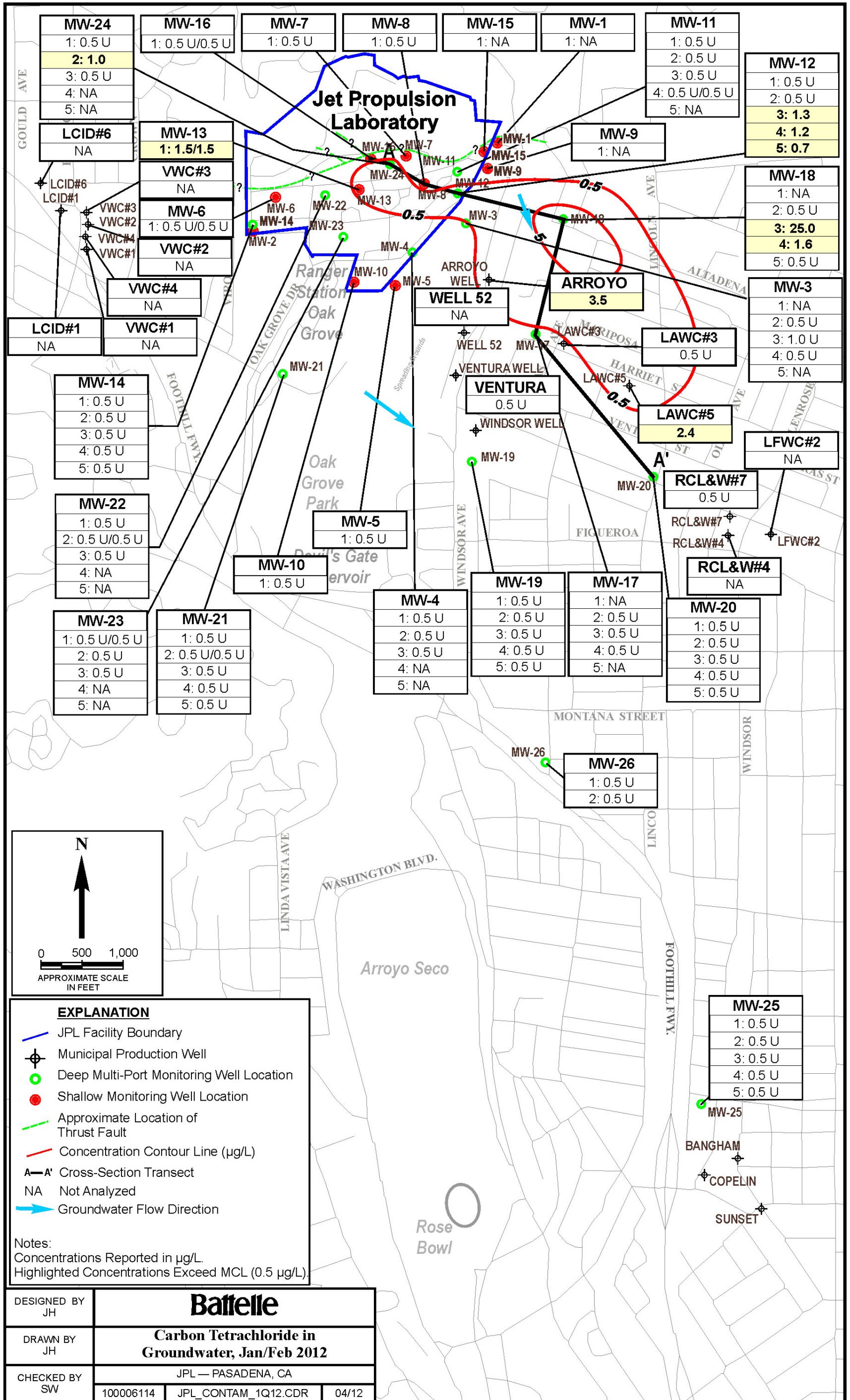


Figure 2.

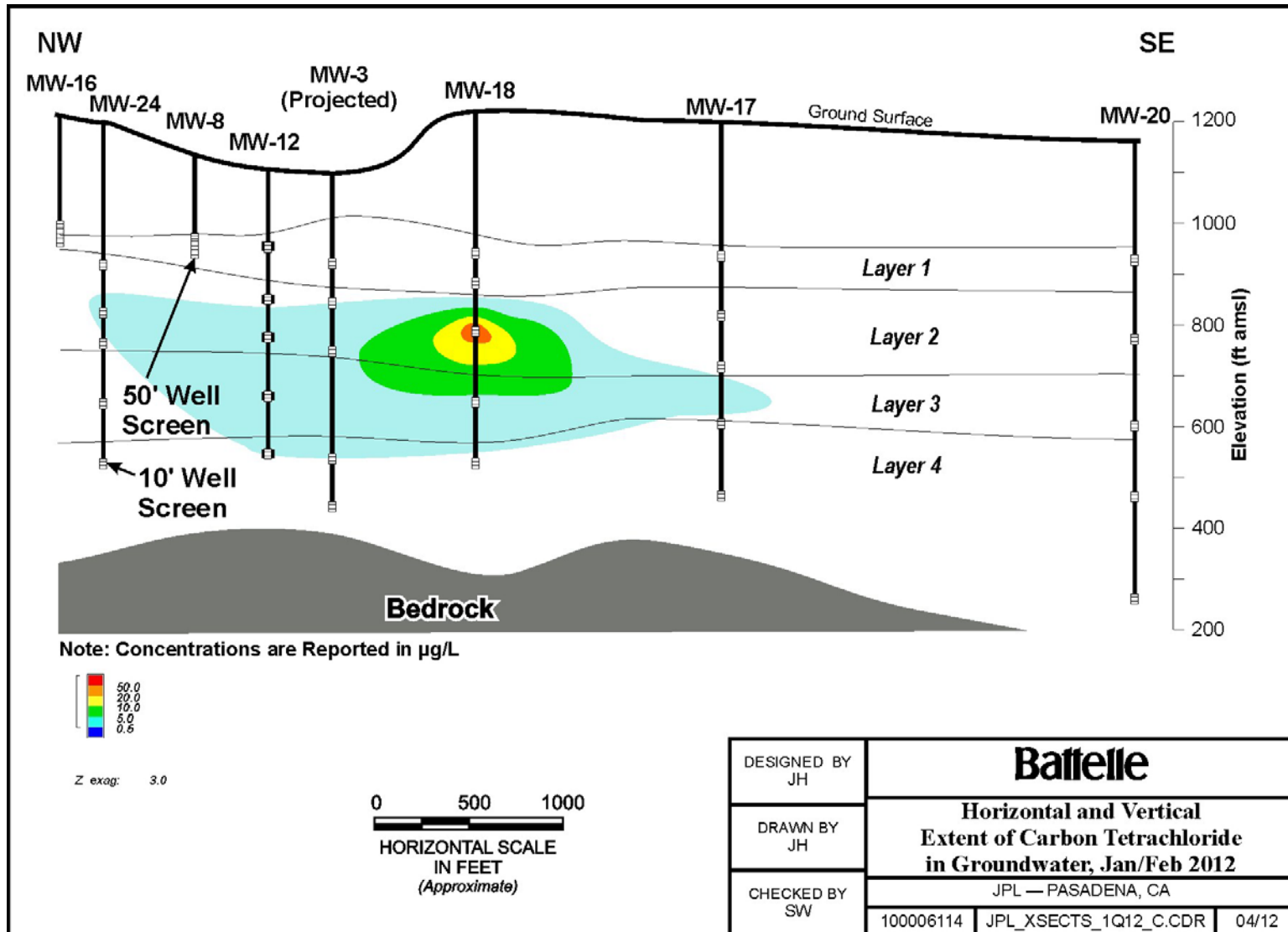


Figure 3.

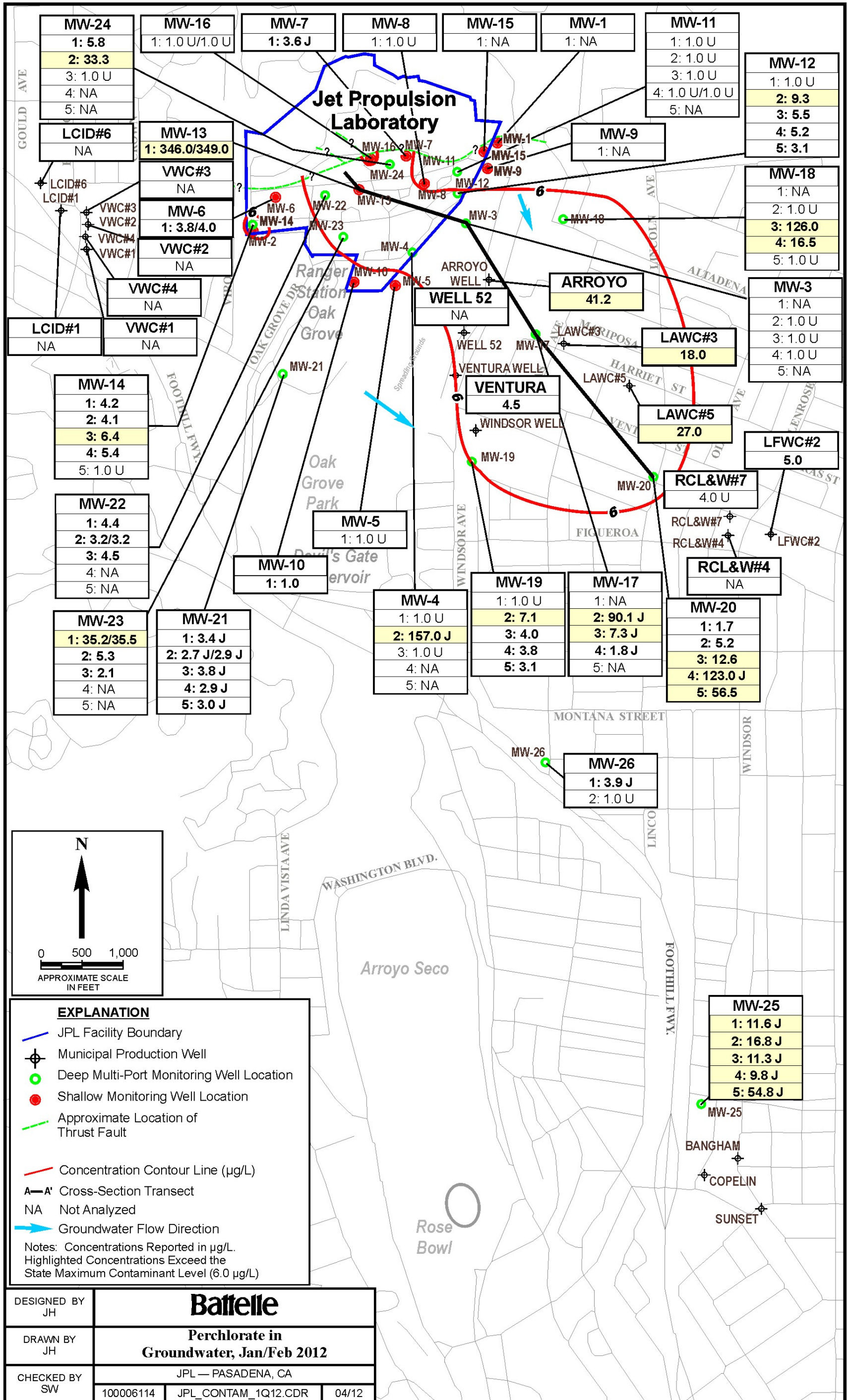


Figure 4.

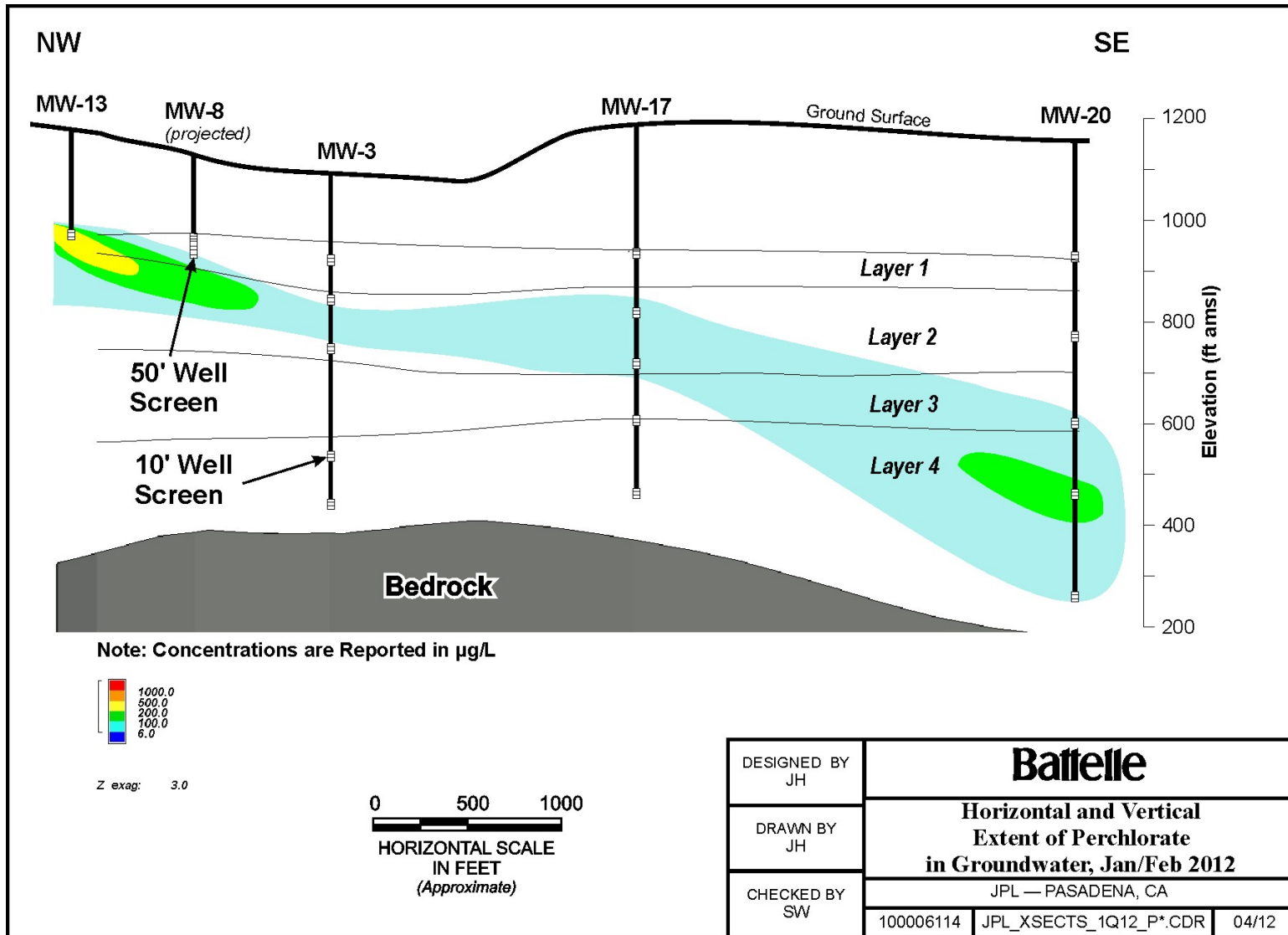


Figure 5.

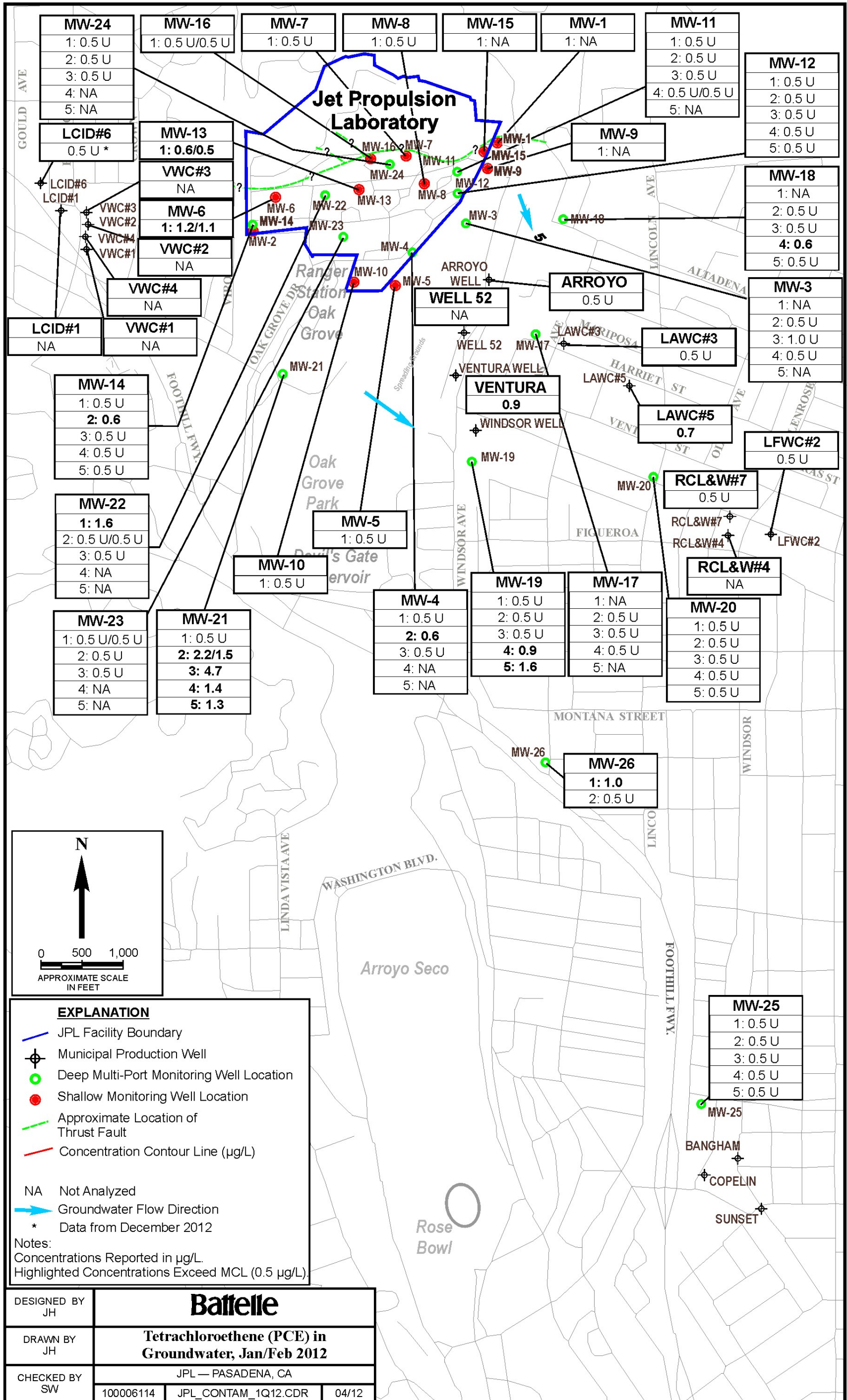


Figure 6.

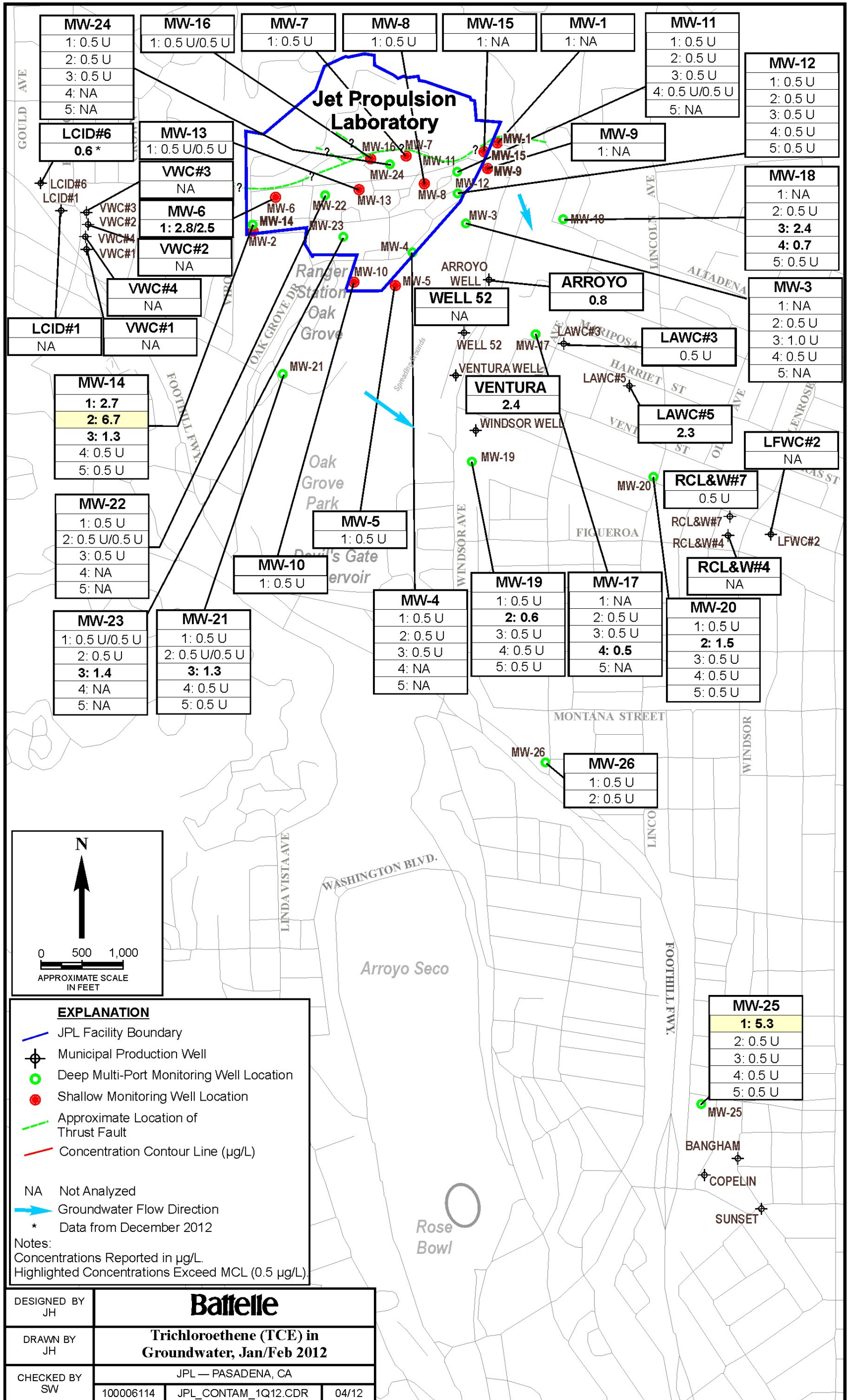


Figure 7.

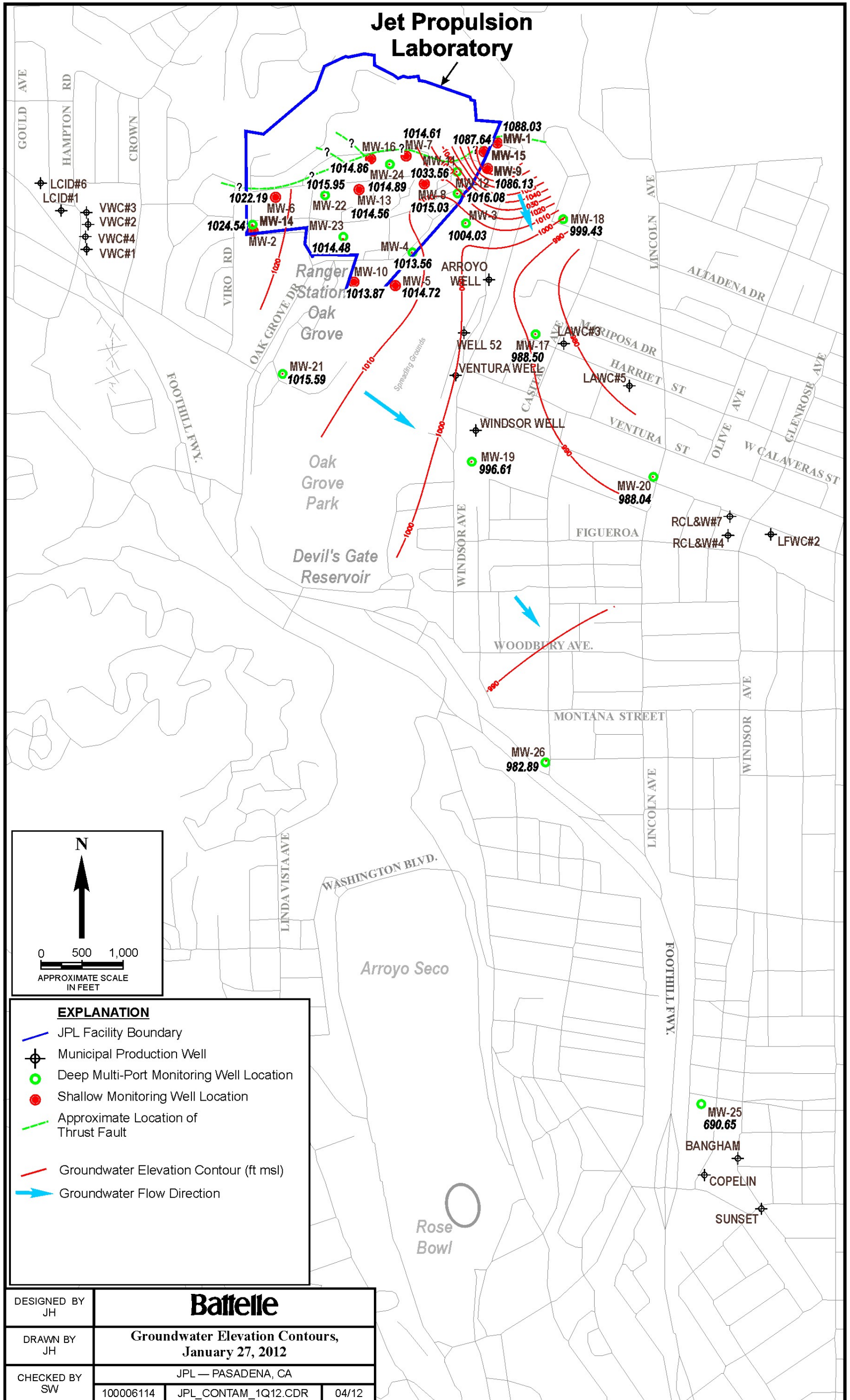


Figure 8.



## TABLES

**TABLE 1**  
**SUMMARY OF VOLATILE ORGANIC COMPOUNDS AND PERCHLORATE DETECTED**  
**DURING THE LAST FOUR SAMPLING EVENTS OF THE LONG-TERM QUARTERLY GROUNDWATER SAMPLING PROGRAM**

(All concentrations reported in µg/L.)

(Shaded values exceed State or Federal MCLs or action levels.)

Sample Location	Sampling Event	Sample Number	Carbon tetrachloride	TCE	PCE	1,1-DCA	1,2-DCA	1,1-DCE	Freon 113	Chloroform	Perchlorate	Other Volatile Organic Compounds and 1,4-Dioxane, NDMA, NDPA, 1,2,3-TCP
MW-1	Apr/May 2011	MW-1	0.5 U	0.5 U	0.5 U	0.5 U	0.5 U	0.5 U	0.5 U	0.5 U	1.0 U	
MW-1	Apr/May 2011	DUPE-5-2Q11	0.5 U	0.5 U	0.5 U	0.5 U	0.5 U	0.5 U	0.5 U	0.5 U	1.0 U	
MW-1	Nov/Dec 2011	MW-1	0.5 U	0.5 U	0.5 U	0.5 U	0.5 U	0.5 U	0.5 U	0.5 U	1.0 U	
MW-3 Screen 1	Apr/May 2011	MW-3-1	0.5 U	0.5 U	0.5 U	0.5 U	0.5 U	0.5 U	0.5 U	0.5 U	1.0 U	
MW-3 Screen 1	Nov/Dec 2011	MW-3-1	0.5 U	0.5 U	0.5 U	0.5 U	0.5 U	0.5 U	0.5 U	0.5 U	1.0 U	
MW-3 Screen 2	Apr/May 2011	MW-3-2	0.5 U	0.5 U	0.5 U	0.5 U	0.5 U	0.5 U	0.5 U	0.5 U	12.9	
MW-3 Screen 2	Aug/Sep 2011	MW-3-2	0.5 U	0.5 U	0.5 U	0.5 U	0.5 U	0.5 U	0.5 U	0.5 U	3.0	
MW-3 Screen 2	Nov/Dec 2011	MW-3-2	0.5 U	0.5 U	0.5 U	0.5 U	0.5 U	0.5 U	0.5 U	0.5 U	1.0 U	
MW-3 Screen 2	Jan/Feb 2012	MW-3-2	0.5 U	0.5 U	0.5 U	0.5 U	0.5 U	0.5 U	0.5 U	0.5 U	1.0 U	
MW-3 Screen 3	Apr/May 2011	MW-3-3	1.0 U	1.0 U	1.0 U	1.0 U	1.0 U	1.0 U	1.0 U	1.0 U	1.0 U	
MW-3 Screen 3	Aug/Sep 2011	MW-3-3	2.0 U	2.0 U	2.0 U	2.0 U	2.0 U	2.0 U	2.0 U	2.0 U	1.0 U	
MW-3 Screen 3	Nov/Dec 2011	MW-3-3	1.0 U	1.0 U	1.0 U	1.0 U	1.0 U	1.0 U	1.0 U	1.0 U	1.0 U	Ethylbenzene 1.3
MW-3 Screen 3	Jan/Feb 2012	MW-3-3	1.0 U	1.0 U	1.0 U	1.0 U	1.0 U	1.0 U	1.0 U	1.0 U	1.0 U	Ethylbenzene 1.2
MW-3 Screen 4	Apr/May 2011	MW-3-4	0.5 U	0.5 U	0.5 U	0.5 U	0.5 U	0.5 U	0.5 U	0.5 U	1.0 U	
MW-3 Screen 4	Aug/Sep 2011	MW-3-4	0.5 U	0.5 U	0.5 U	0.5 U	0.5 U	0.5 U	0.5 U	0.5 U	1.0 U	
MW-3 Screen 4	Nov/Dec 2011	MW-3-4	0.5 U	0.5 U	0.5 U	0.5 U	0.5 U	0.5 U	0.5 U	0.5 U	1.0 U	
MW-3 Screen 4	Nov/Dec 2011	DUPE-3-4Q11	0.5 U	0.5 U	0.5 U	0.5 U	0.5 U	0.5 U	0.5 U	0.5 U	1.6	
MW-3 Screen 4	Jan/Feb 2012	MW-3-4	0.5 U	0.5 U	0.5 U	0.5 U	0.5 U	0.5 U	0.5 U	0.5 U	1.0 U	
MW-3 Screen 5	Apr/May 2011	MW-3-5	0.5 U	0.5 U	0.5 U	0.5 U	0.5 U	0.5 U	0.5 U	0.5 U	1.0 U	
MW-3 Screen 5	Nov/Dec 2011	MW-3-5	0.5 U	0.5 U	0.5 U	0.5 U	0.5 U	0.5 U	0.5 U	0.5 U	1.0 U	
MW-4 Screen 1	Apr/May 2011	MW-4-1	0.5 U	0.5 U	0.5 U	0.5 U	0.5 U	0.5 U	0.5 U	0.5 U	1.0 U	NDMA 0.0 J
MW-4 Screen 1	Aug/Sep 2011	MW-4-1	0.5 U	0.5 U	0.5 U	0.5 U	0.5 U	0.5 U	0.5 U	0.5 U	1.0 U	
MW-4 Screen 1	Nov/Dec 2011	MW-4-1	0.5 U	0.5 U	0.5 U	0.5 U	0.5 U	0.5 U	0.5 U	0.5 U	1.0 U	
MW-4 Screen 1	Jan/Feb 2012	MW-4-1	0.5 U	0.5 U	0.5 U	0.5 U	0.5 U	0.5 U	0.5 U	0.5 U	1.0 U	
MW-4 Screen 2	Apr/May 2011	MW-4-2	0.5 U	0.5 U	0.5	0.5 U	0.5 U	0.5 U	0.5 U	0.5 U	31.7	
MW-4 Screen 2	Aug/Sep 2011	MW-4-2	0.5 U	0.5 U	0.8	0.5 U	0.5 U	0.5 U	0.5 U	0.5 U	17.6	
MW-4 Screen 2	Nov/Dec 2011	MW-4-2	0.5 U	0.5 U	1.1	0.5 U	0.5 U	0.5 U	0.5 U	0.5	46.8	
MW-4 Screen 2	Jan/Feb 2012	MW-4-2	0.5 U	0.5 U	0.6	0.5 U	0.5 U	0.5 U	0.5 U	0.5 U	157.0 J	
MW-4 Screen 3	Apr/May 2011	MW-4-3	0.5 U	0.5 U	0.5 U	0.5 U	0.5 U	0.5 U	0.5 U	0.5 U	1.0 U	
MW-4 Screen 3	Aug/Sep 2011	MW-4-3	0.5 U	0.5 U	0.5 U	0.5 U	0.5 U	0.5 U	0.5 U	0.5 U	1.0 U	
MW-4 Screen 3	Nov/Dec 2011	MW-4-3	0.5 U	0.5 U	0.5 U	0.5 U	0.5 U	0.5 U	0.5 U	0.5 U	1.0 U	
MW-4 Screen 3	Jan/Feb 2012	MW-4-3	0.5 U	0.5 U	0.5 U	0.5 U	0.5 U	0.5 U	0.5 U	0.5 U	1.0 U	
MW-4 Screen 4	Apr/May 2011	MW-4-4	0.5 U	0.5 U	0.5 U	0.5 U	0.5 U	0.5 U	0.5 U	0.5 U	1.0 U	
MW-4 Screen 4	Nov/Dec 2011	MW-4-4	0.5 U	0.5 U	0.5 U	0.5 U	0.5 U	0.5 U	0.5 U	0.5 U	1.0 U	

Sample Location	Sampling Event	Sample Number	Carbon tetrachloride	TCE	PCE	1,1-DCA	1,2-DCA	1,1-DCE	Freon 113	Chloroform	Perchlorate	Other Volatile Organic Compounds and 1,4-Dioxane, NDMA, NDPA, 1,2,3-TCP	
MW-4 Screen 5	Apr/May 2011	MW-4-5	0.5 U	0.5 U	0.5 U	0.5 U	0.5 U	0.5 U	0.5 U	0.5 U	1.0 U		
MW-4 Screen 5	Nov/Dec 2011	MW-4-5	0.5 U	0.5 U	0.5 U	0.5 U	0.5 U	0.5 U	0.5 U	0.5 U	1.0 U		
MW-5	Apr/May 2011	MW-5	0.5 U	0.5 U	0.5 U	0.5 U	0.5 U	0.5 U	0.5 U	0.5 U	1.0 U		
MW-5	Apr/May 2011	DUPE-6-2Q11	0.5 U	0.5 U	0.5 U	0.5 U	0.5 U	0.5 U	0.5 U	0.5 U	1.0 U		
MW-5	Aug/Sep 2011	MW-5	0.5 U	0.5 U	0.5 U	0.5 U	0.5 U	0.5 U	0.5 U	0.5 U	1.0 U		
MW-5	Nov/Dec 2011	MW-5	0.5 U	0.5 U	0.5 U	0.5 U	0.5 U	0.5 U	0.5 U	0.5 U	1.0 U		
MW-5	Jan/Feb 2012	MW-5	0.5 U	0.5 U	0.5 U	0.5 U	0.5 U	0.5 U	0.5 U	0.5 U	1.0 U		
MW-6	Apr/May 2011	MW-6	0.5 U	3.4	1.0	0.5 U	0.5 U	0.5 U	0.5 U	0.6	2.5		
MW-6	Apr/May 2011	DUPE-7-2Q11	0.5 U	3.6	1.1	0.5 U	0.5 U	0.5 U	0.5 U	0.6	2.5		
MW-6	Aug/Sep 2011	MW-6	0.5 U	2.7	1.1	0.5 U	0.5 U	0.5 U	0.5 U	0.6	2.6		
MW-6	Aug/Sep 2011	DUPE-7-3Q11	0.5 U	2.6	1.0	0.5 U	0.5 U	0.5 U	0.5 U	0.5	2.2		
MW-6	Nov/Dec 2011	MW-6	0.5 U	2.8	1.2	0.5 U	0.5 U	0.5 U	0.5 U	0.6	2.1		
MW-6	Jan/Feb 2012	MW-6	0.5 U	2.8	1.2	0.5 U	0.5 U	0.5 U	0.5 U	0.5 U	3.8		
MW-6	Jan/Feb 2012	DUPE-5-1Q12	0.5 U	2.5	1.1	0.5 U	0.5 U	0.5 U	0.5 U	0.5 U	4.0		
MW-7	Apr/May 2011	MW-7	0.5 U	0.5 U	0.5 U	0.5 U	0.5 U	0.5 U	0.5 U	16.0	2.9	Bromodichloromethane	3.2
MW-7	Aug/Sep 2011	MW-7	0.5 U	0.5 U	0.5 U	0.5 U	0.5 U	0.5 U	0.5 U	11.0	10.2	Bromodichloromethane	1.2
MW-7	Nov/Dec 2011	MW-7	0.5 U	0.5 U	0.5 U	0.5 U	0.5 U	0.5 U	0.5 U	1.6	2.0		
MW-7	Jan/Feb 2012	MW-7	0.5 U	0.5 U	0.5 U	0.5 U	0.5 U	0.5 U	0.5 U	0.5 U	3.6 J		
MW-8	Apr/May 2011	MW-8	0.5 U	0.5 U	0.5 U	0.5 U	0.5 U	0.5 U	0.5 U	0.5 U	1.0 U		
MW-8	Apr/May 2011	DUPE-8-2Q11	0.5 U	0.5 U	0.5 U	0.5 U	0.5 U	0.5 U	0.5 U	0.5 U	1.0 U		
MW-8	Aug/Sep 2011	MW-8	0.5 U	0.5 U	0.5 U	0.5 U	0.5 U	0.5 U	0.5 U	0.5 U	1.0 U		
MW-8	Nov/Dec 2011	MW-8	0.5 U	0.5 U	0.5 U	0.5 U	0.5 U	0.5 U	0.5 U	0.5 U	1.0 U		
MW-8	Jan/Feb 2012	MW-8	0.5 U	0.5 U	0.5 U	0.5 U	0.5 U	0.5 U	0.5 U	0.5 U	1.0 U		
MW-9	Apr/May 2011	MW-9	0.5 U	0.5 U	0.5 U	0.5 U	0.5 U	0.5 U	0.5 U	0.5 U	1.0 U		
MW-9	Nov/Dec 2011	MW-9	0.5 U	0.5 U	0.5 U	0.5 U	0.5 U	0.5 U	0.5 U	0.5 U	1.0 U		
MW-10	Apr/May 2011	MW-10	0.5 U	0.5 U	0.5 U	0.5 U	0.5 U	0.5 U	0.5 U	0.5 U	1.0 U		
MW-10	Aug/Sep 2011	MW-10	0.5 U	0.5 U	0.5 U	0.5 U	0.5 U	0.5 U	0.5 U	0.5 U	1.0 U		
MW-10	Nov/Dec 2011	MW-10	0.5 U	0.5 U	0.5 U	0.5 U	0.5 U	0.5 U	0.5 U	0.5 U	1.0 U		
MW-10	Jan/Feb 2012	MW-10	0.5 U	0.5 U	0.5 U	0.5 U	0.5 U	0.5 U	0.5 U	0.5 U	1.0		
MW-11 Screen 1	Apr/May 2011	MW-11-1	0.5 U	0.5 U	0.5 U	0.5 U	0.5 U	0.5 U	0.5 U	0.5 U	1.0 U		
MW-11 Screen 1	Aug/Sep 2011	MW-11-1	0.5 U	0.5 U	0.5 U	0.5 U	0.5 U	0.5 U	0.5 U	0.5 U	1.0 U		
MW-11 Screen 1	Aug/Sep 2011	DUPE-06-3Q11	0.5 U	0.5 U	0.5 U	0.5 U	0.5 U	0.5 U	0.5 U	0.5 U	1.0 U		
MW-11 Screen 1	Nov/Dec 2011	MW-11-1	0.5 U	0.5 U	0.5 U	0.5 U	0.5 U	0.5 U	0.5 U	0.5 U	1.0 U		
MW-11 Screen 1	Jan/Feb 2012	MW-11-1	0.5 U	0.5 U	0.5 U	0.5 U	0.5 U	0.5 U	0.5 U	0.5 U	1.0 U		
MW-11 Screen 2	Apr/May 2011	MW-11-2	0.5 U	0.5 U	0.5 U	0.5 U	0.5 U	0.5 U	0.5 U	0.5 U	1.0 U		
MW-11 Screen 2	Aug/Sep 2011	MW-11-2	0.5 U	0.5 U	0.5 U	0.5 U	0.5 U	0.5 U	0.5 U	0.5 U	1.0 U		
MW-11 Screen 2	Nov/Dec 2011	MW-11-2	0.5 U	0.5 U	0.5 U	0.5 U	0.5 U	0.5 U	0.5 U	0.5 U	1.0 U		
MW-11 Screen 2	Nov/Dec 2011	DUP-8-4Q11	0.5 U	0.5 U	0.5 U	0.5 U	0.5 U	0.5 U	0.5 U	0.5 U	1.0 U		
MW-11 Screen 2	Jan/Feb 2012	MW-11-2	0.5 U	0.5 U	0.5 U	0.5 U	0.5 U	0.5 U	0.5 U	0.5 U	1.0 U		
MW-11 Screen 3	Apr/May 2011	MW-11-3	0.5 U	0.5 U	0.5 U	0.5 U	0.5 U	0.5 U	0.5 U	0.5 U	1.7		

Sample Location	Sampling Event	Sample Number	Carbon tetrachloride	TCE	PCE	1,1-DCA	1,2-DCA	1,1-DCE	Freon 113	Chloroform	Perchlorate	Other Volatile Organic Compounds and 1,4-Dioxane, NDMA, NDPA, 1,2,3-TCP	
MW-11 Screen 3	Aug/Sep 2011	MW-11-3	0.5 U	0.5 U	0.5 U	0.5 U	0.5 U	0.5 U	0.5 U	0.5 U	1.0 U		
MW-11 Screen 3	Nov/Dec 2011	MW-11-3	0.5 U	0.5 U	0.5 U	0.5 U	0.5 U	0.5 U	0.5 U	0.5 U	1.0 U		
MW-11 Screen 3	Jan/Feb 2012	MW-11-3	0.5 U	0.5 U	0.5 U	0.5 U	0.5 U	0.5 U	0.5 U	0.5 U	1.0 U		
MW-11 Screen 4	Apr/May 2011	MW-11-4	0.5 U	0.5 U	0.5 U	0.5 U	0.5 U	0.5 U	0.5 U	0.5 U	1.0 U		
MW-11 Screen 4	Aug/Sep 2011	MW-11-4	0.5 U	0.5 U	0.5 U	0.5 U	0.5 U	0.5 U	0.5 U	0.5 U	1.0 U		
MW-11 Screen 4	Nov/Dec 2011	MW-11-4	0.5 U	0.5 U	0.5 U	0.5 U	0.5 U	0.5 U	0.5 U	0.5 U	1.0 U		
MW-11 Screen 4	Jan/Feb 2012	MW-11-4	0.5 U	0.5 U	0.5 U	0.5 U	0.5 U	0.5 U	0.5 U	0.5 U	1.0 U		
MW-11 Screen 4	Jan/Feb 2012	DUPE-2-1Q12	0.5 U	0.5 U	0.5 U	0.5 U	0.5 U	0.5 U	0.5 U	0.5 U	1.0 U		
MW-11 Screen 5	Apr/May 2011	MW-11-5	0.5 U	0.5 U	0.5 U	0.5 U	0.5 U	0.5 U	0.5 U	0.5 U	1.0 U		
MW-11 Screen 5	Nov/Dec 2011	MW-11-5	0.5 U	0.5 U	0.5 U	0.5 U	0.5 U	0.5 U	0.5 U	0.5 U	1.0 U		
MW-12 Screen 1	Apr/May 2011	MW-12-1	0.5 U	0.5 U	0.5 U	0.5 U	0.5 U	0.5 U	0.5 U	0.5 U	1.0 U		
MW-12 Screen 1	Aug/Sep 2011	MW-12-1	0.5 U	0.5 U	0.5 U	0.5 U	0.5 U	0.5 U	0.5 U	0.5 U	1.0 U		
MW-12 Screen 1	Nov/Dec 2011	MW-12-1	0.5 U	0.5 U	0.5 U	0.5 U	0.5 U	0.5 U	0.5 U	0.5 U	1.0 U		
MW-12 Screen 1	Jan/Feb 2012	MW-12-1	0.5 U	0.5 U	0.5 U	0.5 U	0.5 U	0.5 U	0.5 U	0.5 U	1.0 U		
MW-12 Screen 2	Apr/May 2011	MW-12-2	0.5 U	0.5 U	0.5 U	0.5 U	0.5 U	0.5 U	0.5 U	0.5 U	5.4		
MW-12 Screen 2	Aug/Sep 2011	MW-12-2	0.5 U	0.5 U	0.5 U	0.5 U	0.5 U	0.5 U	0.5 U	0.5 U	6.1 J		
MW-12 Screen 2	Nov/Dec 2011	MW-12-2	0.5 U	0.5 U	0.5 U	0.5 U	0.5 U	0.5 U	0.5 U	0.5 U	5.3		
MW-12 Screen 2	Jan/Feb 2012	MW-12-2	0.5 U	0.5 U	0.5 U	0.5 U	0.5 U	0.5 U	0.5 U	0.5 U	9.3		
MW-12 Screen 3	Apr/May 2011	MW-12-3	1.8	0.5 U	0.5 U	0.5 U	0.5 U	0.5 U	0.5 U	0.8	4.2		
MW-12 Screen 3	Aug/Sep 2011	MW-12-3	1.8	0.5 U	0.5 U	0.5 U	0.5 U	0.5 U	0.5 U	0.9	4.3 J		
MW-12 Screen 3	Nov/Dec 2011	MW-12-3	2.0	0.5 U	0.5 U	0.5 U	0.5 U	0.5 U	0.5 U	0.9	4.4		
MW-12 Screen 3	Jan/Feb 2012	MW-12-3	1.3	0.5 U	0.5 U	0.5 U	0.5 U	0.5 U	0.5 U	0.5	5.5		
MW-12 Screen 4	Apr/May 2011	MW-12-4	0.6	0.5 U	0.5 U	0.5 U	0.5 U	0.5 U	0.5 U	0.6	2.8		
MW-12 Screen 4	Aug/Sep 2011	MW-12-4	1.3	0.5 U	0.5 U	0.5 U	0.5 U	0.5 U	0.5 U	0.9	3.5 J		
MW-12 Screen 4	Nov/Dec 2011	MW-12-4	0.9	0.5 U	0.5 U	0.5 U	0.5 U	0.5 U	0.5 U	0.7	2.9		
MW-12 Screen 4	Jan/Feb 2012	MW-12-4	1.2	0.5 U	0.5 U	0.5 U	0.5 U	0.5 U	0.5 U	0.6	5.2		
MW-12 Screen 5	Apr/May 2011	MW-12-5	0.5 U	0.5 U	0.5 U	0.5 U	0.5 U	0.5 U	0.5 U	0.5 U	1.9		
MW-12 Screen 5	Aug/Sep 2011	MW-12-5	0.7	0.5 U	0.5 U	0.5 U	0.5 U	0.5 U	0.5 U	0.5 U	1.6 J		
MW-12 Screen 5	Nov/Dec 2011	MW-12-5	0.5 U	0.5 U	0.5 U	0.5 U	0.5 U	0.5 U	0.5 U	0.5 U	2.0 J		
MW-12 Screen 5	Jan/Feb 2012	MW-12-5	0.7	0.5 U	0.5 U	0.5 U	0.5 U	0.5 U	0.5 U	0.5 U	3.1		
MW-13	Apr/May 2011	MW-13	0.5	0.9	0.5 U	0.5 U	0.5 U	0.5 U	0.5 U	1.4	81.8	1,4-Dioxane	0.9 J
MW-13	Aug/Sep 2011	MW-13	0.8	1.0	0.5 U	0.5 U	0.5 U	0.5 U	0.5 U	2.3	253.0		
MW-13	Nov/Dec 2011	MW-13	1.9	1.5	0.8	0.5 U	0.5 U	0.5 U	0.5 U	6.2	487.0	Bromodichloromethane	1.1
MW-13	Jan/Feb 2012	MW-13	1.5	0.5 U	0.6	0.5 U	0.5 U	0.5 U	0.5 U	7.1	346.0	Bromodichloromethane Dibromochloromethane	2.6 0.6
MW-13	Jan/Feb 2012	DUPE-6-1Q12	1.5	0.5 U	0.5	0.5 U	0.5 U	0.5 U	0.5 U	7.1	349.0	Bromodichloromethane Dibromochloromethane	2.6 0.6
MW-14 Screen 1	Apr/May 2011	MW-14-1	0.5 U	2.3	0.5 U	0.5 U	0.5 U	0.5 U	0.5 U	0.5 U	1.9		
MW-14 Screen 1	Aug/Sep 2011	MW-14-1	0.5 U	1.6	0.5 U	0.5 U	0.5 U	0.5 U	0.5 U	0.5 U	2.4		
MW-14 Screen 1	Aug/Sep 2011	DUPE-02-3Q11	0.5 U	3.6	0.5 U	0.5 U	0.5 U	0.5 U	0.5 U	0.5	2.4		

Sample Location	Sampling Event	Sample Number	Carbon tetrachloride	TCE	PCE	1,1-DCA	1,2-DCA	1,1-DCE	Freon 113	Chloroform	Perchlorate	Other Volatile Organic Compounds and 1,4-Dioxane, NDMA, NDPA, 1,2,3-TCP	
MW-14 Screen 1	Nov/Dec 2011	MW-14-1	0.5 U	3.9	0.5	0.5 U	0.5 U	0.5 U	0.5 U	0.6	2.3		
MW-14 Screen 1	Jan/Feb 2012	MW-14-1	0.5 U	2.7	0.5 U	0.5 U	0.5 U	0.5 U	0.5 U	0.5 U	4.2		
MW-14 Screen 2	Apr/May 2011	MW-14-2	0.5 U	3.8	0.5 U	0.5 U	0.5 U	0.5 U	0.5 U	0.5 U	3.4		
MW-14 Screen 2	Aug/Sep 2011	MW-14-2	0.5 U	5.7	0.5 U	0.5 U	0.5 U	0.5 U	0.5 U	0.5	2.5		
MW-14 Screen 2	Nov/Dec 2011	MW-14-2	0.5 U	6.7	0.5	0.5 U	0.5 U	0.5 U	0.5 U	0.6	1.5		
MW-14 Screen 2	Jan/Feb 2012	MW-14-2	0.5 U	6.7	0.6	0.5 U	0.5 U	0.5 U	0.5 U	0.5 U	4.1		
MW-14 Screen 3	Apr/May 2011	MW-14-3	0.5 U	1.4	0.5 U	0.5 U	0.5 U	0.5 U	0.5 U	0.5 U	4.5		
MW-14 Screen 3	Aug/Sep 2011	MW-14-3	0.5 U	2.2	0.8	0.5 U	0.5 U	0.5 U	0.5 U	0.6	4.4		
MW-14 Screen 3	Nov/Dec 2011	MW-14-3	0.5 U	2.1	0.7	0.5 U	0.5 U	0.5 U	0.5 U	0.6	3.8		
MW-14 Screen 3	Jan/Feb 2012	MW-14-3	0.5 U	1.3	0.5 U	0.5 U	0.5 U	0.5 U	0.5 U	0.5 U	6.4		
MW-14 Screen 4	Apr/May 2011	MW-14-4	0.5 U	0.5 U	0.5 U	0.5 U	0.5 U	0.5 U	0.5 U	0.5 U	3.9		
MW-14 Screen 4	Aug/Sep 2011	MW-14-4	0.5 U	0.5 U	0.5 U	0.5 U	0.5 U	0.5 U	0.5 U	0.5 U	3.9		
MW-14 Screen 4	Nov/Dec 2011	MW-14-4	0.5 U	0.5 U	0.5 U	0.5 U	0.5 U	0.5 U	0.5 U	0.5 U	4.0		
MW-14 Screen 4	Nov/Dec 2011	DUPE-5-4Q11	0.5 U	0.5 U	0.5 U	0.5 U	0.5 U	0.5 U	0.5 U	0.5 U	3.8		
MW-14 Screen 4	Jan/Feb 2012	MW-14-4	0.5 U	0.5 U	0.5 U	0.5 U	0.5 U	0.5 U	0.5 U	0.5 U	5.4		
MW-14 Screen 5	Apr/May 2011	MW-14-5	0.5 U	0.5 U	0.5 U	0.5 U	0.5 U	0.5 U	0.5 U	0.5 U	1.0 U		
MW-14 Screen 5	Aug/Sep 2011	MW-14-5	0.5 U	0.5 U	0.5 U	0.5 U	0.5 U	0.5 U	0.5 U	0.5 U	1.0 U		
MW-14 Screen 5	Nov/Dec 2011	MW-14-5	0.5 U	0.5 U	0.5 U	0.5 U	0.5 U	0.5 U	0.5 U	0.5 U	1.0 U		
MW-14 Screen 5	Jan/Feb 2012	MW-14-5	0.5 U	0.5 U	0.5 U	0.5 U	0.5 U	0.5 U	0.5 U	0.5 U	1.0 U		
MW-15	Apr/May 2011	MW-15	0.5 U	0.5 U	0.5 U	0.5 U	0.5 U	0.5 U	0.5 U	0.5 U	1.0 U		
MW-15	Nov/Dec 2011	MW-15	0.5 U	0.5 U	0.5 U	0.5 U	0.5 U	0.5 U	0.5 U	0.5 U	1.0 U		
MW-16	Apr/May 2011	MW-16	0.5 U	0.5 U	0.5 U	0.5 U	0.5 U	0.5 U	0.5 U	7.6	2.4	1,4-Dioxane Bromodichloromethane Bromoform Dibromochloromethane	0.8 J 6.6 1.1 3.6
MW-16	Aug/Sep 2011	MW-16	0.5 U	0.5 U	0.5 U	0.5 U	0.5 U	0.5 U	0.5 U	8.9	2.5	Bromodichloromethane Bromoform Dibromochloromethane	8.0 2.6 5.8
MW-16	Nov/Dec 2011	MW-16	0.5 U	0.5 U	0.5 U	0.5 U	0.5 U	0.5 U	0.5 U	0.5 U	1.0 U		
MW-16	Jan/Feb 2012	MW-16	0.5 U	0.5 U	0.5 U	0.5 U	0.5 U	0.5 U	0.5 U	0.5 U	1.0 U		
MW-16	Jan/Feb 2012	DUPE-7-1Q12	0.5 U	0.5 U	0.5 U	0.5 U	0.5 U	0.5 U	0.5 U	0.5 U	1.0 U		
MW-17 Screen 1	Apr/May 2011	MW-17-1	0.5 U	0.5 U	0.5 U	0.5 U	0.5 U	0.5 U	0.5 U	0.7	1.0 U		
MW-17 Screen 1	Nov/Dec 2011	MW-17-1	0.5 U	0.5 U	0.5 U	0.5 U	0.5 U	0.5 U	0.5 U	0.5 U	1.0 U		
MW-17 Screen 2	Apr/May 2011	MW-17-2	0.5 U	0.5 U	0.5 U	0.5 U	0.5 U	0.5 U	0.5 U	0.5 U	76.0		
MW-17 Screen 2	Aug/Sep 2011	MW-17-2	0.5 U	0.5 U	0.5 U	0.5 U	0.5 U	0.5 U	0.5 U	0.5 U	78.7 J		
MW-17 Screen 2	Nov/Dec 2011	MW-17-2	0.5 U	0.5	0.5 U	0.5 U	0.5 U	0.5 U	0.5 U	0.5 U	52.1		
MW-17 Screen 2	Jan/Feb 2012	MW-17-2	0.5 U	0.5 U	0.5 U	0.5 U	0.5 U	0.5 U	0.5 U	0.5 U	90.1 J		
MW-17 Screen 3	Apr/May 2011	MW-17-3	0.5 U	0.5 U	0.5 U	0.5 U	0.5 U	0.5 U	0.5 U	0.5 U	7.1		
MW-17 Screen 3	Aug/Sep 2011	MW-17-3	0.5 U	0.5 U	0.5 U	0.5 U	0.5 U	0.5 U	0.5 U	0.5 U	6.6 J		
MW-17 Screen 3	Nov/Dec 2011	MW-17-3	0.5 U	0.5 U	0.5 U	0.5 U	0.5 U	0.5 U	0.5 U	0.5 U	7.6		

Sample Location	Sampling Event	Sample Number	Carbon tetrachloride	TCE	PCE	1,1-DCA	1,2-DCA	1,1-DCE	Freon 113	Chloroform	Perchlorate	Other Volatile Organic Compounds and 1,4-Dioxane, NDMA, NDPA, 1,2,3-TCP
MW-17 Screen 3	Nov/Dec 2011	DUPE-4-4Q11	0.5 U	0.5 U	0.5 U	0.5 U	0.5 U	0.5 U	0.5 U	0.5 U	7.8	
MW-17 Screen 3	Jan/Feb 2012	MW-17-3	0.5 U	0.5 U	0.5 U	0.5 U	0.5 U	0.5 U	0.5 U	0.5 U	7.3 J	
MW-17 Screen 4	Apr/May 2011	MW-17-4	0.5 U	0.5 U	0.5 U	0.5 U	0.5 U	0.5 U	0.5 U	0.5 U	3.0	
MW-17 Screen 4	Aug/Sep 2011	MW-17-4	0.5 U	1.2	0.5 U	0.5 U	0.5 U	0.5 U	0.5 U	0.5 U	1.1 J	
MW-17 Screen 4	Nov/Dec 2011	MW-17-4	0.5 U	1.0	0.5 U	0.5 U	0.5 U	0.5 U	0.5 U	0.5 U	1.0 U	
MW-17 Screen 4	Jan/Feb 2012	MW-17-4	0.5 U	0.5	0.5 U	0.5 U	0.5 U	0.5 U	0.5 U	0.5 U	1.8 J	
MW-17 Screen 5	Apr/May 2011	MW-17-5	0.5 U	0.5 U	0.5 U	0.5 U	0.5 U	0.5 U	0.5 U	0.5 U	1.0 U	
MW-17 Screen 5	Nov/Dec 2011	MW-17-5	0.5 U	0.5 U	0.5 U	0.5 U	0.5 U	0.5 U	0.5 U	0.5 U	1.0 U	
MW-18 Screen 1	Apr/May 2011	MW-18-1	0.5 U	0.5 U	0.5 U	0.5 U	0.5 U	0.5 U	0.5 U	0.5 U	1.0 U	
MW-18 Screen 1	Nov/Dec 2011	MW-18-1	0.5 U	0.5 U	0.5 U	0.5 U	0.5 U	0.5 U	0.5 U	0.5 U	1.0 U	
MW-18 Screen 2	Apr/May 2011	MW-18-2	0.5 U	0.5 U	0.5 U	0.5 U	0.5 U	0.5 U	0.5 U	0.5 U	1.0 U	
MW-18 Screen 2	Aug/Sep 2011	MW-18-2	0.5 U	0.5 U	0.5 U	0.5 U	0.5 U	0.5 U	0.5 U	0.5 U	1.0 U	
MW-18 Screen 2	Aug/Sep 2011	DUPE-03-3Q11	0.5 U	0.5 U	0.5 U	0.5 U	0.5 U	0.5 U	0.5 U	0.5 U	1.0 U	
MW-18 Screen 2	Nov/Dec 2011	MW-18-2	0.5 U	0.5 U	0.5 U	0.5 U	0.5 U	0.5 U	0.5 U	0.5 U	1.0 U	
MW-18 Screen 2	Jan/Feb 2012	MW-18-2	0.5 U	0.5 U	0.5 U	0.5 U	0.5 U	0.5 U	0.5 U	0.5 U	1.0 U	
MW-18 Screen 3	Apr/May 2011	MW-18-3	9.6	0.8	0.5 U	0.5 U	0.5 U	0.5 U	0.5 U	1.5	54.8	
MW-18 Screen 3	Aug/Sep 2011	MW-18-3	43.0	3.6	0.5 U	0.5 U	0.5 U	0.5 U	0.9	4.7	144.0	
MW-18 Screen 3	Nov/Dec 2011	MW-18-3	37.0	3.1	0.5 U	0.5 U	0.5 U	0.5 U	0.9	3.9	110.0	
MW-18 Screen 3	Jan/Feb 2012	MW-18-3	25.0	2.4	0.5 U	0.5 U	0.5 U	0.5 U	0.5	2.8	126.0	
MW-18 Screen 4	Apr/May 2011	MW-18-4	3.3	0.6	0.5 U	0.5 U	0.5 U	0.5 U	0.5 U	1.4	38.3	
MW-18 Screen 4	Aug/Sep 2011	MW-18-4	1.9	0.8	0.8	0.5 U	0.5 U	0.5 U	0.5 U	0.7	10.9 J	
MW-18 Screen 4	Nov/Dec 2011	MW-18-4	2.8	1.0	1.1	0.5 U	0.5 U	0.5 U	0.5 U	0.9	11.6	
MW-18 Screen 4	Jan/Feb 2012	MW-18-4	1.6	0.7	0.6	0.5 U	0.5 U	0.5 U	0.5 U	0.5 U	16.5	
MW-18 Screen 5	Apr/May 2011	MW-18-5	0.5 U	0.5 U	0.5 U	0.5 U	0.5 U	0.5 U	0.5 U	0.5 U	1.0 U	
MW-18 Screen 5	Aug/Sep 2011	MW-18-5	0.5 U	0.5 U	0.5 U	0.5 U	0.5 U	0.5 U	0.5 U	0.5 U	1.0 U	
MW-18 Screen 5	Nov/Dec 2011	MW-18-5	0.5 U	0.5 U	0.5 U	0.5 U	0.5 U	0.5 U	0.5 U	0.5 U	1.0 U	
MW-18 Screen 5	Jan/Feb 2012	MW-18-5	0.5 U	0.5 U	0.5 U	0.5 U	0.5 U	0.5 U	0.5 U	0.5 U	1.0 U	
MW-19 Screen 1	Apr/May 2011	MW-19-1	0.5 U	0.5 U	0.5 U	0.5 U	0.5 U	0.5 U	0.5 U	0.5 U	4.6	
MW-19 Screen 1	Aug/Sep 2011	MW-19-1	0.5 U	0.5 U	0.5 U	0.5 U	0.5 U	0.5 U	0.5 U	0.5 U	1.8	
MW-19 Screen 1	Nov/Dec 2011	MW-19-1	0.5 U	0.5 U	0.5 U	0.5 U	0.5 U	0.5 U	0.5 U	0.5 U	1.0 U	Styrene 3.4
MW-19 Screen 1	Nov/Dec 2011	DUPE-2-4Q11	0.5 U	0.5 U	0.5 U	0.5 U	0.5 U	0.5 U	0.5 U	0.5 U	1.0 U	Styrene 2.8
MW-19 Screen 1	Jan/Feb 2012	MW-19-1	0.5 U	0.5 U	0.5 U	0.5 U	0.5 U	0.5 U	0.5 U	0.5 U	1.0 U	
MW-19 Screen 2	Apr/May 2011	MW-19-2	0.5 U	1.2	0.5 U	0.5 U	0.5 U	0.5 U	0.5 U	0.5 U	5.1	
MW-19 Screen 2	Aug/Sep 2011	MW-19-2	0.5 U	1.4	0.5 U	0.5 U	0.5 U	0.5 U	0.5 U	0.5 U	5.0	
MW-19 Screen 2	Nov/Dec 2011	MW-19-2	0.5 U	1.3	0.6	0.5 U	0.5 U	0.5 U	0.5 U	0.5 U	4.1	
MW-19 Screen 2	Jan/Feb 2012	MW-19-2	0.5 U	0.6	0.5 U	0.5 U	0.5 U	0.5 U	0.5 U	0.5 U	7.1	
MW-19 Screen 3	Apr/May 2011	MW-19-3	0.5 U	0.5 U	0.5 U	0.5 U	0.5 U	0.5 U	0.5 U	0.5 U	3.1	
MW-19 Screen 3	Apr/May 2011	DUPE-3-2Q11	0.5 U	0.5 U	0.5 U	0.5 U	0.5 U	0.5 U	0.5 U	0.5 U	2.8	
MW-19 Screen 3	Aug/Sep 2011	MW-19-3	0.5 U	0.5 U	0.5 U	0.5 U	0.5 U	0.5 U	0.5 U	0.5 U	3.3	
MW-19 Screen 3	Nov/Dec 2011	MW-19-3	0.5 U	0.5 U	0.5 U	0.5 U	0.5 U	0.5 U	0.5 U	0.5 U	3.2	Styrene 0.8

Sample Location	Sampling Event	Sample Number	Carbon tetrachloride	TCE	PCE	1,1-DCA	1,2-DCA	1,1-DCE	Freon 113	Chloroform	Perchlorate	Other Volatile Organic Compounds and 1,4-Dioxane, NDMA, NDPA, 1,2,3-TCP	
MW-19 Screen 3	Jan/Feb 2012	MW-19-3	0.5 U	0.5 U	0.5 U	0.5 U	0.5 U	0.5 U	0.5 U	0.5 U	4.0		
MW-19 Screen 4	Apr/May 2011	MW-19-4	0.5 U	0.5 U	0.5 U	0.5 U	0.5 U	0.5 U	0.5 U	0.5 U	2.2		
MW-19 Screen 4	Aug/Sep 2011	MW-19-4	0.5 U	0.5 U	0.5 U	0.5 U	0.5 U	0.5 U	0.5 U	0.5 U	2.2		
MW-19 Screen 4	Aug/Sep 2011	DUPE-01-3Q11	0.5 U	0.5 U	0.5 U	0.5 U	0.5 U	0.5 U	0.5 U	0.5 U	2.1		
MW-19 Screen 4	Nov/Dec 2011	MW-19-4	0.5 U	0.5 U	0.7	0.5 U	0.5 U	0.5 U	0.5 U	0.5 U	2.3		
MW-19 Screen 4	Jan/Feb 2012	MW-19-4	0.5 U	0.5 U	0.9	0.5 U	0.5 U	0.5 U	0.5 U	0.5 U	3.8		
MW-19 Screen 5	Apr/May 2011	MW-19-5	0.5 U	0.5 U	0.6	0.5 U	0.5 U	0.5 U	0.5 U	0.5 U	2.2		
MW-19 Screen 5	Aug/Sep 2011	MW-19-5	0.5 U	0.5 U	0.9	0.5 U	0.5 U	0.5 U	0.5 U	0.5 U	2.3		
MW-19 Screen 5	Nov/Dec 2011	MW-19-5	0.5 U	0.5 U	0.9	0.5 U	0.5 U	0.5 U	0.5 U	0.5 U	2.0		
MW-19 Screen 5	Jan/Feb 2012	MW-19-5	0.5 U	0.5 U	1.6	0.5 U	0.5 U	0.5 U	0.5 U	0.5 U	3.1		
MW-20 Screen 1	Apr/May 2011	MW-20-1	0.5 U	0.5 U	0.5 U	0.5 U	0.5 U	0.5 U	0.5 U	0.5 U	1.0 U		
MW-20 Screen 1	Aug/Sep 2011	MW-20-1	0.5 U	0.5 U	0.5 U	0.5 U	0.5 U	0.5 U	0.5 U	0.5 U	1.3 J		
MW-20 Screen 1	Nov/Dec 2011	MW-20-1	0.5 U	0.5 U	0.5 U	0.5 U	0.5 U	0.5 U	0.5 U	0.5 U	1.0 U		
MW-20 Screen 1	Jan/Feb 2012	MW-20-1	0.5 U	0.5 U	0.5 U	0.5 U	0.5 U	0.5 U	0.5 U	0.5 U	1.7		
MW-20 Screen 2	Apr/May 2011	MW-20-2	0.5 U	0.5 U	0.5 U	0.5 U	0.5 U	0.5 U	0.5 U	0.5 U	2.8		
MW-20 Screen 2	Aug/Sep 2011	MW-20-2	0.5 U	0.5 U	0.5 U	0.5 U	0.5 U	0.5 U	0.5 U	0.5 U	2.5 J		
MW-20 Screen 2	Nov/Dec 2011	MW-20-2	0.5 U	0.8	0.5 U	0.5 U	0.5 U	0.5 U	0.5 U	0.5 U	2.5		
MW-20 Screen 2	Jan/Feb 2012	MW-20-2	0.5 U	1.5	0.5 U	0.5 U	0.5 U	0.5 U	0.5 U	0.5 U	5.2		
MW-20 Screen 3	Apr/May 2011	MW-20-3	0.5 U	0.6	0.5 U	0.5 U	0.5 U	0.5 U	0.5 U	0.5 U	1.0 U		
MW-20 Screen 3	Aug/Sep 2011	MW-20-3	0.5 U	0.7	0.5 U	0.5 U	0.5 U	0.5 U	0.5 U	0.5 U	1.0 U		
MW-20 Screen 3	Nov/Dec 2011	MW-20-3	0.5 U	0.7	0.5 U	0.5 U	0.5 U	0.5 U	0.5 U	0.5 U	1.0 U		
MW-20 Screen 3	Jan/Feb 2012	MW-20-3	0.5 U	0.5 U	0.5 U	0.5 U	0.5 U	0.5 U	0.5 U	0.5 U	12.6	Methyl-tert-butyl ether (MTBE) Styrene	1.2 1.7
MW-20 Screen 4	Apr/May 2011	MW-20-4	0.5 U	0.5 U	0.5 U	0.5 U	0.5 U	0.5 U	0.5 U	0.5 U	15.1		
MW-20 Screen 4	Apr/May 2011	DUPE-2-2Q11	0.5 U	0.5 U	0.5 U	0.5 U	0.5 U	0.5 U	0.5 U	0.5 U	15.8		
MW-20 Screen 4	Aug/Sep 2011	MW-20-4	0.5 U	0.5 U	0.5 U	0.5 U	0.5 U	0.5 U	0.5 U	0.5 U	1.0 U		
MW-20 Screen 4	Aug/Sep 2011	DUPE-04-3Q11	0.5 U	0.5 U	0.5 U	0.5 U	0.5 U	0.5 U	0.5 U	0.5 U	1.0 U		
MW-20 Screen 4	Nov/Dec 2011	MW-20-4	0.5 U	0.5 U	0.5 U	0.5 U	0.5 U	0.5 U	0.5 U	0.5 U	1.0 U		
MW-20 Screen 4	Jan/Feb 2012	MW-20-4	0.5 U	0.5 U	0.5 U	0.5 U	0.5 U	0.5 U	0.5 U	0.5 U	123.0 J		
MW-20 Screen 5	Apr/May 2011	MW-20-5	0.5 U	0.5 U	0.5 U	0.5 U	0.5 U	0.5 U	0.5 U	0.5 U	4.2		
MW-20 Screen 5	Aug/Sep 2011	MW-20-5	0.5 U	0.5 U	0.5 U	0.5 U	0.5 U	0.5 U	0.5 U	0.5 U	1.0 U		
MW-20 Screen 5	Nov/Dec 2011	MW-20-5	0.5 U	0.5 U	0.5 U	0.5 U	0.5 U	0.5 U	0.5 U	0.5 U	1.0 U		
MW-20 Screen 5	Jan/Feb 2012	MW-20-5	0.5 U	0.5 U	0.5 U	0.5 U	0.5 U	0.5 U	0.5 U	0.5 U	56.5		
MW-21 Screen 1	Apr/May 2011	MW-21-1	0.5 U	0.5 U	0.5 U	0.5 U	0.5 U	0.5 U	0.5 U	0.9	2.6		
MW-21 Screen 1	Aug/Sep 2011	MW-21-1	0.5 U	0.5 U	0.5	0.5 U	0.5 U	0.5 U	0.5 U	1.0	2.4		
MW-21 Screen 1	Nov/Dec 2011	MW-21-1	0.5 U	0.5 U	0.9	0.5 U	0.5 U	0.5 U	0.5 U	2.0	2.1		
MW-21 Screen 1	Jan/Feb 2012	MW-21-1	0.5 U	0.5 U	0.5 U	0.5 U	0.5 U	0.5 U	0.5 U	1.0	3.4 J		
MW-21 Screen 2	Apr/May 2011	MW-21-2	0.5 U	0.5 U	3.5	0.5 U	0.5 U	0.5 U	0.5 U	2.0	1.9		
MW-21 Screen 2	Aug/Sep 2011	MW-21-2	0.5 U	0.5 U	2.2	0.5 U	0.5 U	0.5 U	0.5 U	2.7	1.8		
MW-21 Screen 2	Nov/Dec 2011	MW-21-2	0.5 U	0.5 U	2.6	0.5 U	0.5 U	0.5 U	0.5 U	5.1	1.6		

Sample Location	Sampling Event	Sample Number	Carbon tetrachloride	TCE	PCE	1,1-DCA	1,2-DCA	1,1-DCE	Freon 113	Chloroform	Perchlorate	Other Volatile Organic Compounds and 1,4-Dioxane, NDMA, NDPA, 1,2,3-TCP	
MW-21 Screen 2	Nov/Dec 2011	DUPE-1-4Q11	0.5 U	0.5 U	2.3	0.5 U	0.5 U	0.5 U	0.5 U	4.6	1.6		
MW-21 Screen 2	Jan/Feb 2012	MW-21-2	0.5 U	0.5 U	2.2	0.5 U	0.5 U	0.5 U	0.5 U	6.1	2.7 J		
MW-21 Screen 2	Jan/Feb 2012	DUPE-1-1Q12	0.5 U	0.5 U	1.5	0.5 U	0.5 U	0.5 U	0.5 U	4.5	2.9 J		
MW-21 Screen 3	Apr/May 2011	MW-21-3	0.5 U	1.0	3.5	0.5 U	0.5 U	0.5 U	0.5 U	4.5	2.5	cis-1,2-Dichloroethene	0.6
MW-21 Screen 3	Aug/Sep 2011	MW-21-3	0.5 U	1.4	3.9	0.5 U	0.5 U	0.5 U	0.5 U	7.1	2.4	cis-1,2-Dichloroethene	0.6
MW-21 Screen 3	Nov/Dec 2011	MW-21-3	0.5 U	1.2	3.7	0.5 U	0.5 U	0.5 U	0.5 U	6.3	2.1		
MW-21 Screen 3	Jan/Feb 2012	MW-21-3	0.5 U	1.3	4.7	0.5 U	0.5 U	0.5 U	0.5 U	5.5	3.8 J	cis-1,2-Dichloroethene	0.7
MW-21 Screen 4	Apr/May 2011	MW-21-4	0.5 U	0.5 U	1.2	0.5 U	0.5 U	0.5 U	0.5 U	6.1	2.1		
MW-21 Screen 4	Aug/Sep 2011	MW-21-4	0.5 U	0.5 U	1.5	0.5 U	0.5 U	0.5 U	0.5 U	7.1	2.2		
MW-21 Screen 4	Nov/Dec 2011	MW-21-4	0.5 U	0.5 U	1.2	0.5 U	0.5 U	0.5 U	0.5 U	6.9	2.0		
MW-21 Screen 4	Jan/Feb 2012	MW-21-4	0.5 U	0.5 U	1.4	0.5 U	0.5 U	0.5 U	0.5 U	7.0	2.9 J		
MW-21 Screen 5	Apr/May 2011	MW-21-5	0.5 U	0.5 U	1.4	0.5 U	0.5 U	0.5 U	0.5 U	3.9	2.4		
MW-21 Screen 5	Aug/Sep 2011	MW-21-5	0.5 U	0.5 U	1.2	0.5 U	0.5 U	0.5 U	0.5 U	4.9	2.6		
MW-21 Screen 5	Nov/Dec 2011	MW-21-5	0.5 U	0.5 U	1.1	0.5 U	0.5 U	0.5 U	0.5 U	5.8	1.9		
MW-21 Screen 5	Jan/Feb 2012	MW-21-5	0.5 U	0.5 U	1.3	0.5 U	0.5 U	0.5 U	0.5 U	5.1	3.0 J		
MW-22 Screen 1	Apr/May 2011	MW-22-1	0.5 U	0.5 U	0.5 U	0.5 U	0.5 U	0.5 U	0.5 U	2.7	40.1	Bromodichloromethane Dibromochloromethane	2.3 0.9
MW-22 Screen 1	Aug/Sep 2011	MW-22-1	0.5 U	0.5 U	0.5 U	0.5 U	0.5 U	0.5 U	0.5 U	3.8	98.7	Bromodichloromethane Dibromochloromethane	1.7 0.9
MW-22 Screen 1	Nov/Dec 2011	MW-22-1	0.5 U	0.5 U	0.5 U	0.5 U	0.5 U	0.5 U	0.5 U	1.0	85.2		
MW-22 Screen 1	Jan/Feb 2012	MW-22-1	0.5 U	0.5 U	1.6	0.5	0.5 U	0.5 U	0.5 U	0.5 U	4.4		
MW-22 Screen 2	Apr/May 2011	MW-22-2	0.5 U	0.5 U	0.5 U	0.5 U	0.5 U	0.5 U	0.5 U	0.5 U	2.1		
MW-22 Screen 2	Aug/Sep 2011	MW-22-2	0.5 U	0.5 U	0.5 U	0.5 U	0.5 U	0.5 U	0.5 U	0.5 U	2.0		
MW-22 Screen 2	Nov/Dec 2011	MW-22-2	0.5 U	0.5 U	0.5 U	0.5 U	0.5 U	0.5 U	0.5 U	0.5 U	1.9		
MW-22 Screen 2	Jan/Feb 2012	MW-22-2	0.5 U	0.5 U	0.5 U	0.5 U	0.5 U	0.5 U	0.5 U	0.5 U	3.2		
MW-22 Screen 2	Jan/Feb 2012	DUPE-4-1Q12	0.5 U	0.5 U	0.5 U	0.5 U	0.5 U	0.5 U	0.5 U	0.5 U	3.2		
MW-22 Screen 3	Apr/May 2011	MW-22-3	0.5 U	0.5 U	0.5 U	0.5 U	0.5 U	0.5 U	0.5 U	0.5 U	1.8		
MW-22 Screen 3	Aug/Sep 2011	MW-22-3	0.5 U	0.5 U	0.5 U	0.5 U	0.5 U	0.5 U	0.5 U	0.5 U	2.7		
MW-22 Screen 3	Nov/Dec 2011	MW-22-3	0.5 U	0.5 U	0.5 U	0.5 U	0.5 U	0.5 U	0.5 U	0.5 U	3.1		
MW-22 Screen 3	Jan/Feb 2012	MW-22-3	0.5 U	0.5 U	0.5 U	0.5 U	0.5 U	0.5 U	0.5 U	0.5 U	4.5		
MW-22 Screen 4	Apr/May 2011	MW-22-4	0.5 U	0.5 U	0.5 U	0.5 U	0.5 U	0.5 U	0.5 U	0.5 U	1.0 U		
MW-22 Screen 4	Nov/Dec 2011	MW-22-4	0.5 U	0.5 U	0.5 U	0.5 U	0.5 U	0.5 U	0.5 U	0.5 U	1.0 U		
MW-22 Screen 4	Nov/Dec 2011	DUPE-6-4Q11	0.5 U	0.5 U	0.5 U	0.5 U	0.5 U	0.5 U	0.5 U	0.5 U	1.0 U		
MW-22 Screen 5	Apr/May 2011	MW-22-5	0.5 U	0.5 U	0.5 U	0.5 U	0.5 U	0.5 U	0.5 U	0.5 U	12.4		
MW-22 Screen 5	Nov/Dec 2011	MW-22-5	0.5 U	0.5 U	0.5 U	0.5 U	0.5 U	0.5 U	0.5 U	0.5 U	47.3		
MW-23 Screen 1	Apr/May 2011	MW-23-1	0.5 U	0.5 U	0.5 U	0.5 U	0.5 U	0.5 U	0.5 U	0.5 U	97.8		
MW-23 Screen 1	Aug/Sep 2011	MW-23-1	0.5 U	0.5 U	0.5 U	0.5 U	0.5 U	0.5 U	0.5 U	0.5 U	9.7		
MW-23 Screen 1	Nov/Dec 2011	MW-23-1	0.5 U	0.8	0.5 U	0.5 U	0.5 U	0.5 U	0.5 U	1.8	103.0		
MW-23 Screen 1	Jan/Feb 2012	MW-23-1	0.5 U	0.5 U	0.5 U	0.5 U	0.5 U	0.5 U	0.5 U	1.5	35.2		
MW-23 Screen 1	Jan/Feb 2012	DUPE-3-1Q12	0.5 U	0.5 U	0.5 U	0.5 U	0.5 U	0.5 U	0.5 U	1.2	35.5		



Sample Location	Sampling Event	Sample Number	Carbon tetrachloride	TCE	PCE	1,1-DCA	1,2-DCA	1,1-DCE	Freon 113	Chloroform	Perchlorate	Other Volatile Organic Compounds and 1,4-Dioxane, NDMA, NDPA, 1,2,3-TCP	
MW-23 Screen 2	Apr/May 2011	MW-23-2	0.5 U	1.1	0.5 U	0.5 U	0.5 U	0.5 U	0.5 U	0.5 U	3.5		
MW-23 Screen 2	Aug/Sep 2011	MW-23-2	0.5 U	2.0	0.9	0.5 U	0.5 U	0.5 U	0.5 U	0.6	3.0		
MW-23 Screen 2	Nov/Dec 2011	MW-23-2	0.5 U	1.5	0.7	0.5 U	0.5 U	0.5 U	0.5 U	0.7	2.8		
MW-23 Screen 2	Jan/Feb 2012	MW-23-2	0.5 U	1.4	0.5 U	0.5 U	0.5 U	0.5 U	0.5 U	0.5 U	5.3		
MW-23 Screen 3	Apr/May 2011	MW-23-3	0.5 U	0.5 U	0.5 U	0.5 U	0.5 U	0.5 U	0.5 U	0.5 U	1.5		
MW-23 Screen 3	Aug/Sep 2011	MW-23-3	0.5 U	0.5 U	0.5 U	0.5 U	0.5 U	0.5 U	0.5 U	0.5 U	1.2		
MW-23 Screen 3	Nov/Dec 2011	MW-23-3	0.5 U	0.5 U	0.5 U	0.5 U	0.5 U	0.5 U	0.5 U	0.5 U	1.3		
MW-23 Screen 3	Jan/Feb 2012	MW-23-3	0.5 U	0.5 U	0.5 U	0.5 U	0.5 U	0.5 U	0.5 U	0.5 U	2.1		
MW-23 Screen 4	Apr/May 2011	MW-23-4	0.5 U	0.5 U	0.5 U	0.5 U	0.5 U	0.5 U	0.5 U	0.5 U	1.0 U		
MW-23 Screen 4	Nov/Dec 2011	MW-23-4	0.5 U	0.5 U	0.5 U	0.5 U	0.5 U	0.5 U	0.5 U	0.5 U	1.0 U		
MW-23 Screen 5	Apr/May 2011	MW-23-5	0.5 U	0.5 U	0.5 U	0.5 U	0.5 U	0.5 U	0.5 U	0.5 U	1.0 U		
MW-23 Screen 5	Nov/Dec 2011	MW-23-5	0.5 U	0.5 U	0.5 U	0.5 U	0.5 U	0.5 U	0.5 U	0.5 U	1.0 U		
MW-24 Screen 1	Apr/May 2011	MW-24-1	0.5 U	0.5 U	0.5 U	0.5 U	0.5 U	0.5 U	0.5 U	9.1	10.4	1,4-Dioxane NDMA	1.1 0.0 J
MW-24 Screen 1	Aug/Sep 2011	MW-24-1	0.5 U	0.5 U	0.5 U	0.5 U	0.5 U	0.5 U	0.5 U	6.4	12.2		
MW-24 Screen 1	Nov/Dec 2011	MW-24-1	0.5 U	0.5 U	0.5 U	0.5 U	0.5 U	0.5 U	0.5 U	6.1	4.6		
MW-24 Screen 1	Jan/Feb 2012	MW-24-1	0.5 U	0.5 U	0.5 U	0.5 U	0.5 U	0.5 U	0.5 U	2.4	5.8		
MW-24 Screen 2	Apr/May 2011	MW-24-2	0.5 U	0.5 U	0.5 U	0.5 U	0.5 U	0.5 U	0.5 U	0.5 U	17.2		
MW-24 Screen 2	Apr/May 2011	DUPE-1-2Q11	0.5 U	0.5 U	0.5 U	0.5 U	0.5 U	0.5 U	0.5 U	0.5 U	17.5		
MW-24 Screen 2	Aug/Sep 2011	MW-24-2	1.3	0.5 U	0.5 U	0.5 U	0.5 U	0.5 U	0.5 U	0.7	33.0		
MW-24 Screen 2	Nov/Dec 2011	MW-24-2	1.7	0.5 U	0.5 U	0.5 U	0.5 U	0.5 U	0.5 U	0.9	38.5		
MW-24 Screen 2	Jan/Feb 2012	MW-24-2	1.0	0.5 U	0.5 U	0.5 U	0.5 U	0.5 U	0.5 U	0.5 U	33.3		
MW-24 Screen 3	Apr/May 2011	MW-24-3	0.5 U	0.5 U	0.5 U	0.5 U	0.5 U	0.5 U	0.5 U	0.5 U	1.0 U		
MW-24 Screen 3	Aug/Sep 2011	MW-24-3	0.5 U	0.5 U	0.5 U	0.5 U	0.5 U	0.5 U	0.5 U	0.5 U	1.0 U		
MW-24 Screen 3	Nov/Dec 2011	MW-24-3	0.5 U	0.5 U	0.5 U	0.5 U	0.5 U	0.5 U	0.5 U	0.5 U	1.0 U		
MW-24 Screen 3	Nov/Dec 2011	DUPE-7-4Q11	0.5 U	0.5 U	0.5 U	0.5 U	0.5 U	0.5 U	0.5 U	0.5 U	1.0 U		
MW-24 Screen 3	Jan/Feb 2012	MW-24-3	0.5 U	0.5 U	0.5 U	0.5 U	0.5 U	0.5 U	0.5 U	0.5 U	1.0 U		
MW-24 Screen 4	Apr/May 2011	MW-24-4	0.5 U	0.5 U	0.5 U	0.5 U	0.5 U	0.5 U	0.5 U	0.5 U	1.0 U		
MW-24 Screen 4	Nov/Dec 2011	MW-24-4	0.5 U	0.5 U	0.5 U	0.5 U	0.5 U	0.5 U	0.5 U	0.5 U	1.0 U		
MW-24 Screen 5	Apr/May 2011	MW-24-5	0.5 U	0.5 U	0.5 U	0.5 U	0.5 U	0.5 U	0.5 U	0.5 U	1.0 U		
MW-24 Screen 5	Nov/Dec 2011	MW-24-5	0.5 U	0.5 U	0.5 U	0.5 U	0.5 U	0.5 U	0.5 U	0.5 U	1.0 U		
MW-25 Screen 1	Apr/May 2011	MW-25-1	0.5 U	3.5	0.5 U	0.5 U	0.5 U	0.5 U	0.5 U	0.5 U	9.2		
MW-25 Screen 1	Aug/Sep 2011	MW-25-1	0.5 U	6.4	0.5 U	0.5 U	0.5 U	0.5 U	0.5 U	0.6	8.3		
MW-25 Screen 1	Nov/Dec 2011	MW-25-1	0.5 U	5.2	0.5 U	0.5 U	0.5 U	0.5 U	0.5 U	0.5 U	7.8		
MW-25 Screen 1	Jan/Feb 2012	MW-25-1	0.5 U	5.3	0.5 U	0.5 U	0.5 U	0.5 U	0.5 U	0.5 U	11.6 J		
MW-25 Screen 2	Apr/May 2011	MW-25-2	0.5 U	0.5 U	0.5 U	0.5 U	0.5 U	0.5 U	0.5 U	0.5 U	13.3		
MW-25 Screen 2	Apr/May 2011	DUPE-4-2Q11	0.5 U	0.5 U	0.5 U	0.5 U	0.5 U	0.5 U	0.5 U	0.5 U	13.1		
MW-25 Screen 2	Aug/Sep 2011	MW-25-2	0.5 U	0.5 U	0.5 U	0.5 U	0.5 U	0.5 U	0.5 U	0.5 U	13.3		
MW-25 Screen 2	Aug/Sep 2011	DUPE-05-3Q11	0.5 U	0.5 U	0.5 U	0.5 U	0.5 U	0.5 U	0.5 U	0.5 U	13.2		
MW-25 Screen 2	Nov/Dec 2011	MW-25-2	0.5 U	0.5 U	0.5 U	0.5 U	0.5 U	0.5 U	0.5 U	0.5 U	12.6		

Sample Location	Sampling Event	Sample Number	Carbon tetrachloride	TCE	PCE	1,1-DCA	1,2-DCA	1,1-DCE	Freon 113	Chloroform	Perchlorate	Other Volatile Organic Compounds and 1,4-Dioxane, NDMA, NDPA, 1,2,3-TCP
MW-25 Screen 2	Jan/Feb 2012	MW-25-2	0.5 U	0.5 U	0.5 U	0.5 U	0.5 U	0.5 U	0.5 U	0.5 U	16.8 J	
MW-25 Screen 3	Apr/May 2011	MW-25-3	0.5 U	0.5 U	0.5 U	0.5 U	0.5 U	0.5 U	0.5 U	0.8	8.5	
MW-25 Screen 3	Aug/Sep 2011	MW-25-3	0.5 U	0.5 U	0.5 U	0.5 U	0.5 U	0.5 U	0.5 U	0.6	9.1	
MW-25 Screen 3	Nov/Dec 2011	MW-25-3	0.5 U	0.5 U	0.5 U	0.5 U	0.5 U	0.5 U	0.5 U	0.7	8.5	
MW-25 Screen 3	Jan/Feb 2012	MW-25-3	0.5 U	0.5 U	0.5 U	0.5 U	0.5 U	0.5 U	0.5 U	0.5 U	11.3 J	
MW-25 Screen 4	Apr/May 2011	MW-25-4	0.5 U	0.5 U	0.5 U	0.5 U	0.5 U	0.5 U	0.5 U	0.5 U	7.3	
MW-25 Screen 4	Aug/Sep 2011	MW-25-4	0.5 U	0.5 U	0.5 U	0.5 U	0.5 U	0.5 U	0.5 U	0.5 U	7.6	
MW-25 Screen 4	Nov/Dec 2011	MW-25-4	0.5 U	0.5 U	0.5 U	0.5 U	0.5 U	0.5 U	0.5 U	0.5 U	7.0	
MW-25 Screen 4	Jan/Feb 2012	MW-25-4	0.5 U	0.5 U	0.5 U	0.5 U	0.5 U	0.5 U	0.5 U	0.5 U	9.8 J	
MW-25 Screen 5	Apr/May 2011	MW-25-5	0.5 U	0.5 U	0.5 U	0.5 U	0.5 U	0.5 U	0.5 U	0.5 U	39.2	
MW-25 Screen 5	Aug/Sep 2011	MW-25-5	0.5 U	0.5 U	0.5 U	0.5 U	0.5 U	0.5 U	0.5 U	0.5 U	1.0 U	
MW-25 Screen 5	Nov/Dec 2011	MW-25-5	0.5 U	0.5 U	0.5 U	0.5 U	0.5 U	0.5 U	0.5 U	0.5 U	1.0 U	
MW-25 Screen 5	Jan/Feb 2012	MW-25-5	0.5 U	0.5 U	0.5 U	0.5 U	0.5 U	0.5 U	0.5 U	0.5 U	54.8 J	
MW-26 Screen 1	Apr/May 2011	MW-26-1	0.5 U	0.5 U	0.9	0.5 U	0.5 U	0.5 U	0.5 U	0.5 U	3.0	
MW-26 Screen 1	Aug/Sep 2011	MW-26-1	0.5 U	0.6	1.6	0.5 U	0.5 U	0.5 U	0.5 U	0.5 U	2.2	
MW-26 Screen 1	Nov/Dec 2011	MW-26-1	0.5 U	0.5 U	1.3	0.5 U	0.5 U	0.5 U	0.5 U	0.5 U	2.3	
MW-26 Screen 1	Jan/Feb 2012	MW-26-1	0.5 U	0.5 U	1.0	0.5 U	0.5 U	0.5 U	0.5 U	0.5 U	3.9 J	
MW-26 Screen 2	Apr/May 2011	MW-26-2	0.5 U	0.5 U	0.5 U	0.5 U	0.5 U	0.5 U	0.5 U	0.5 U	1.0 U	
MW-26 Screen 2	Aug/Sep 2011	MW-26-2	0.5 U	0.5 U	0.5 U	0.5 U	0.5 U	0.5 U	0.5 U	0.5 U	1.0 U	
MW-26 Screen 2	Nov/Dec 2011	MW-26-2	0.5 U	0.5 U	0.5 U	0.5 U	0.5 U	0.5 U	0.5 U	0.5 U	1.0 U	
MW-26 Screen 2	Jan/Feb 2012	MW-26-2	0.5 U	0.5 U	0.5 U	0.5 U	0.5 U	0.5 U	0.5 U	0.5 U	1.0 U	
California Maximum Contaminant Level (MCL)			0.5	5	5	5	0.5	6	1200	100	6.0 *	
EPA Region IX Maximum Contaminant Level			5	5	5	NE	5	7	NE	100	NE	

**Notes**

- DUPE Field Duplicate
- NA Not analyzed
- NE Not established
- \* Interim Action Level - California Department of Public Health
- J Analyte concentration is an estimated value
- U Analyte was analyzed for but not detected at or above the stated limit

**TABLE 2**  
**SUMMARY OF METALS DETECTED**  
**DURING THE LAST FOUR SAMPLING EVENTS OF THE LONG-TERM QUARTERLY**  
**GROUNDWATER SAMPLING PROGRAM**

(All concentrations reported in µg/L; except for Hexavalent Chromium, which is reported in mg/L.)

(Shaded values exceed State or Federal MCLs or action levels.)

Sample Location	Sampling Event	Sample Number	Arsenic (µg/L)	Lead (µg/L)	Chromium, Total (µg/L)	Chromium, Hexavalent (mg/L)
MW-1	Apr/May 2011	MW-1	2.0 U	5.000 U	5.0 U	0.010 U
MW-1	Apr/May 2011	DUPE-5-2Q11	2.0 U	5.000 U	5.0 U	0.010 U
MW-1	Nov/Dec 2011	MW-1	NA	NA	5.0 U	0.010 U
MW-3 Screen 1	Apr/May 2011	MW-3-1	2.0 U	5.000 U	5.0 U	0.010 U
MW-3 Screen 1	Nov/Dec 2011	MW-3-1	NA	NA	5.0 U	0.010 U
MW-3 Screen 2	Apr/May 2011	MW-3-2	2.0 U	5.000 U	5.0 U	0.010 U
MW-3 Screen 2	Aug/Sep 2011	MW-3-2	NA	NA	5.0 U	0.010 U
MW-3 Screen 2	Nov/Dec 2011	MW-3-2	NA	NA	5.0 U	0.010 U
MW-3 Screen 2	Jan/Feb 2012	MW-3-2	NA	NA	5.0 U	0.010 U
MW-3 Screen 3	Apr/May 2011	MW-3-3	2.0 U	5.000 U	5.0 U	0.010 U
MW-3 Screen 3	Aug/Sep 2011	MW-3-3	NA	NA	5.0 U	0.010 U
MW-3 Screen 3	Nov/Dec 2011	MW-3-3	NA	NA	5.0 U	0.010 U
MW-3 Screen 3	Jan/Feb 2012	MW-3-3	NA	NA	5.0 U	0.010 U
MW-3 Screen 4	Apr/May 2011	MW-3-4	<b>2.6</b>	5.000 U	5.0 U	0.010 U
MW-3 Screen 4	Aug/Sep 2011	MW-3-4	NA	NA	5.0 U	0.010 U
MW-3 Screen 4	Nov/Dec 2011	MW-3-4	NA	NA	5.0 U	0.010 U
MW-3 Screen 4	Nov/Dec 2011	DUPE-3-4Q11	NA	NA	5.0 U	0.010 U
MW-3 Screen 4	Jan/Feb 2012	MW-3-4	NA	NA	5.0 U	0.010 U
MW-3 Screen 5	Apr/May 2011	MW-3-5	2.0 U	5.000 U	5.0 U	0.010 U
MW-3 Screen 5	Nov/Dec 2011	MW-3-5	NA	NA	5.0 U	0.010 U
MW-4 Screen 1	Apr/May 2011	MW-4-1	2.0 U	5.000 U	5.0 U	0.010 U
MW-4 Screen 1	Aug/Sep 2011	MW-4-1	NA	NA	5.0 U	0.010 U
MW-4 Screen 1	Nov/Dec 2011	MW-4-1	NA	NA	5.0 U	0.010 U
MW-4 Screen 1	Jan/Feb 2012	MW-4-1	NA	NA	5.0 U	0.010 U
MW-4 Screen 2	Apr/May 2011	MW-4-2	2.0 U	5.000 U	5.0 U	0.010 U
MW-4 Screen 2	Aug/Sep 2011	MW-4-2	NA	NA	5.0 U	0.010 U
MW-4 Screen 2	Nov/Dec 2011	MW-4-2	NA	NA	5.0 U	0.010 U
MW-4 Screen 2	Jan/Feb 2012	MW-4-2	NA	NA	5.0 U	0.010 U
MW-4 Screen 3	Apr/May 2011	MW-4-3	2.0 U	5.000 U	5.0 U	0.010 U
MW-4 Screen 3	Aug/Sep 2011	MW-4-3	NA	NA	5.0 U	0.010 U
MW-4 Screen 3	Nov/Dec 2011	MW-4-3	NA	NA	5.0 U	0.010 U
MW-4 Screen 3	Jan/Feb 2012	MW-4-3	NA	NA	5.0 U	0.010 U
MW-4 Screen 4	Apr/May 2011	MW-4-4	2.0 U	5.000 U	5.0 U	0.010 U
MW-4 Screen 4	Nov/Dec 2011	MW-4-4	NA	NA	5.0 U	0.010 U
MW-4 Screen 5	Apr/May 2011	MW-4-5	2.0 U	5.000 U	5.0 U	0.010 U

Sample Location	Sampling Event	Sample Number	Arsenic (µg/L)	Lead (µg/L)	Chromium, Total (µg/L)	Chromium, Hexavalent (mg/L)
MW-4 Screen 5	Nov/Dec 2011	MW-4-5	NA	NA	5.0 U	0.010 U
MW-5	Apr/May 2011	MW-5	2.0 U	5.000 U	5.0 U	0.010 U
MW-5	Apr/May 2011	DUPE-6-2Q11	2.0 U	5.000 U	5.0 U	0.010 U
MW-5	Aug/Sep 2011	MW-5	NA	NA	5.0 U	0.010 U
MW-5	Nov/Dec 2011	MW-5	NA	NA	5.0 U	0.010 U
MW-5	Jan/Feb 2012	MW-5	NA	NA	5.0 U	0.010 U
MW-6	Apr/May 2011	MW-6	2.0 U	5.000 U	5.0 U	0.010 U
MW-6	Apr/May 2011	DUPE-7-2Q11	2.0 U	5.000 U	5.0 U	0.010 U
MW-6	Aug/Sep 2011	MW-6	NA	NA	5.0 U	0.010 U
MW-6	Aug/Sep 2011	DUPE-7-3Q11	NA	NA	5.0 U	NA
MW-6	Nov/Dec 2011	MW-6	NA	NA	5.0 U	0.010 U
MW-6	Jan/Feb 2012	MW-6	NA	NA	5.0 U	0.010 U
MW-6	Jan/Feb 2012	DUPE-5-1Q12	NA	NA	5.0 U	0.010 U
MW-7	Apr/May 2011	MW-7	2.0 U	5.000 U	<b>15.0</b>	<b>0.014</b>
MW-7	Aug/Sep 2011	MW-7	NA	NA	<b>79.0</b>	0.010 U
MW-7	Nov/Dec 2011	MW-7	NA	NA	5.0 U	0.010 U
MW-7	Jan/Feb 2012	MW-7	NA	NA	5.0 U	0.010 U
MW-8	Apr/May 2011	MW-8	2.0 U	5.000 U	5.0 U	0.010 U
MW-8	Apr/May 2011	DUPE-8-2Q11	2.0 U	5.000 U	5.0 U	0.010 U
MW-8	Aug/Sep 2011	MW-8	NA	NA	5.0 U	0.010 U
MW-8	Nov/Dec 2011	MW-8	NA	NA	5.0 U	0.010 U
MW-8	Jan/Feb 2012	MW-8	NA	NA	5.0 U	0.010 U
MW-9	Apr/May 2011	MW-9	2.0 U	5.000 U	5.0 U	0.010 U
MW-9	Nov/Dec 2011	MW-9	NA	NA	5.0 U	<b>0.006 J</b>
MW-10	Apr/May 2011	MW-10	2.0 U	5.000 U	5.0 U	0.010 U
MW-10	Aug/Sep 2011	MW-10	NA	NA	5.0 U	0.010 U
MW-10	Nov/Dec 2011	MW-10	NA	NA	<b>5.4</b>	0.010 U
MW-10	Jan/Feb 2012	MW-10	NA	NA	5.0 U	0.010 U
MW-11 Screen 1	Apr/May 2011	MW-11-1	2.0 U	5.000 U	5.0 U	0.010 U
MW-11 Screen 1	Aug/Sep 2011	MW-11-1	NA	NA	5.0 U	0.010 U
MW-11 Screen 1	Aug/Sep 2011	DUPE-06-3Q11	NA	NA	5.0 U	0.010 U
MW-11 Screen 1	Nov/Dec 2011	MW-11-1	NA	NA	5.0 U	0.010 U
MW-11 Screen 1	Jan/Feb 2012	MW-11-1	NA	NA	5.0 U	0.010 U
MW-11 Screen 2	Apr/May 2011	MW-11-2	2.0 U	5.000 U	5.0 U	0.010 U
MW-11 Screen 2	Aug/Sep 2011	MW-11-2	NA	NA	5.0 U	0.010 U
MW-11 Screen 2	Nov/Dec 2011	MW-11-2	NA	NA	5.0 U	0.010 U
MW-11 Screen 2	Nov/Dec 2011	DUP-8-4Q11	NA	NA	5.0 U	0.010 U
MW-11 Screen 2	Jan/Feb 2012	MW-11-2	NA	NA	5.0 U	0.010 U
MW-11 Screen 3	Apr/May 2011	MW-11-3	2.0 U	5.000 U	5.0 U	0.010 U
MW-11 Screen 3	Aug/Sep 2011	MW-11-3	NA	NA	5.0 U	0.010 U
MW-11 Screen 3	Nov/Dec 2011	MW-11-3	NA	NA	5.0 U	0.010 U
MW-11 Screen 3	Jan/Feb 2012	MW-11-3	NA	NA	5.0 U	0.010 U

Sample Location	Sampling Event	Sample Number	Arsenic (µg/L)	Lead (µg/L)	Chromium, Total (µg/L)	Chromium, Hexavalent (mg/L)
MW-11 Screen 4	Apr/May 2011	MW-11-4	2.0 U	5.000 U	5.0 U	0.010 U
MW-11 Screen 4	Nov/Dec 2011	MW-11-4	NA	NA	5.0 U	0.010 U
MW-11 Screen 5	Apr/May 2011	MW-11-5	<b>6.2</b>	5.000 U	5.0 U	0.010 U
MW-11 Screen 5	Nov/Dec 2011	MW-11-5	NA	NA	5.0 U	0.010 U
MW-12 Screen 1	Apr/May 2011	MW-12-1	2.0 U	5.000 U	5.0 U	0.010 U
MW-12 Screen 1	Aug/Sep 2011	MW-12-1	NA	NA	5.0 U	0.010 U
MW-12 Screen 1	Nov/Dec 2011	MW-12-1	NA	NA	5.0 U	0.010 U
MW-12 Screen 1	Jan/Feb 2012	MW-12-1	NA	NA	5.0 U	0.010 U
MW-12 Screen 2	Apr/May 2011	MW-12-2	2.0 U	5.000 U	5.0 U	0.010 U
MW-12 Screen 2	Aug/Sep 2011	MW-12-2	NA	NA	5.0 U	0.010 U
MW-12 Screen 2	Nov/Dec 2011	MW-12-2	NA	NA	5.0 U	0.010 U
MW-12 Screen 2	Jan/Feb 2012	MW-12-2	NA	NA	5.0 U	0.010 U
MW-12 Screen 3	Apr/May 2011	MW-12-3	2.0 U	5.000 U	5.0 U	0.010 U
MW-12 Screen 3	Aug/Sep 2011	MW-12-3	NA	NA	5.0 U	0.010 U
MW-12 Screen 3	Nov/Dec 2011	MW-12-3	NA	NA	5.0 U	0.010 U
MW-12 Screen 3	Jan/Feb 2012	MW-12-3	NA	NA	5.0 U	0.010 U
MW-12 Screen 4	Apr/May 2011	MW-12-4	2.0 U	5.000 U	5.0 U	0.010 U
MW-12 Screen 4	Nov/Dec 2011	MW-12-4	NA	NA	5.0 U	0.010 U
MW-12 Screen 5	Apr/May 2011	MW-12-5	<b>2.9</b>	5.000 U	5.0 U	0.010 U
MW-12 Screen 5	Nov/Dec 2011	MW-12-5	NA	NA	5.0 U	0.010 U
MW-13	Apr/May 2011	MW-13	2.0 U	5.000 U	<b>15.0</b>	<b>0.009 J</b>
MW-13	Aug/Sep 2011	MW-13	NA	NA	<b>6.0</b>	<b>0.006 J</b>
MW-13	Nov/Dec 2011	MW-13	NA	NA	<b>14.0 J</b>	<b>0.005 J</b>
MW-13	Jan/Feb 2012	MW-13	NA	NA	<b>5.8</b>	<b>0.007 J</b>
MW-13	Jan/Feb 2012	DUPE-6-1Q12	NA	NA	<b>5.6</b>	<b>0.008 J</b>
MW-14 Screen 1	Apr/May 2011	MW-14-1	2.0 U	5.000 U	5.0 U	0.010 U
MW-14 Screen 1	Aug/Sep 2011	MW-14-1	NA	NA	5.0 U	0.010 U
MW-14 Screen 1	Aug/Sep 2011	DUPE-02-3Q11	NA	NA	5.0 U	0.010 U
MW-14 Screen 1	Nov/Dec 2011	MW-14-1	NA	NA	5.0 U	0.010 U
MW-14 Screen 1	Jan/Feb 2012	MW-14-1	NA	NA	5.0 U	0.010 U
MW-14 Screen 2	Apr/May 2011	MW-14-2	2.0 U	5.000 U	5.0 U	0.010 U
MW-14 Screen 2	Aug/Sep 2011	MW-14-2	NA	NA	5.0 U	0.010 U
MW-14 Screen 2	Nov/Dec 2011	MW-14-2	NA	NA	5.0 U	0.010 U
MW-14 Screen 2	Jan/Feb 2012	MW-14-2	NA	NA	5.0 U	0.010 U
MW-14 Screen 3	Apr/May 2011	MW-14-3	2.0 U	5.000 U	5.0 U	0.010 U
MW-14 Screen 3	Aug/Sep 2011	MW-14-3	NA	NA	5.0 U	0.010 U
MW-14 Screen 3	Nov/Dec 2011	MW-14-3	NA	NA	5.0 U	0.010 U
MW-14 Screen 3	Jan/Feb 2012	MW-14-3	NA	NA	5.0 U	0.010 U
MW-14 Screen 4	Apr/May 2011	MW-14-4	2.0 U	5.000 U	5.0 U	0.010 U
MW-14 Screen 4	Nov/Dec 2011	MW-14-4	NA	NA	5.0 U	0.010 U
MW-14 Screen 4	Nov/Dec 2011	DUPE-5-4Q11	NA	NA	5.0 U	0.010 U
MW-14 Screen 5	Apr/May 2011	MW-14-5	2.0 U	5.000 U	5.0 U	0.010 U

Sample Location	Sampling Event	Sample Number	Arsenic (µg/L)	Lead (µg/L)	Chromium, Total (µg/L)	Chromium, Hexavalent (mg/L)
MW-14 Screen 5	Nov/Dec 2011	MW-14-5	NA	NA	5.0 U	0.010 U
MW-15	Apr/May 2011	MW-15	2.0 U	5.000 U	5.0 U	0.010 U
MW-15	Aug/Sep 2011	MW-15	NA	NA	5.0 U	0.010 U
MW-15	Nov/Dec 2011	MW-15	NA	NA	5.0 U	0.010 U
MW-15	Jan/Feb 2012	MW-15	NA	NA	5.0 U	0.010 U
MW-16	Apr/May 2011	MW-16	4.7	5.000 U	5.9	0.005 J
MW-16	Aug/Sep 2011	MW-16	NA	NA	5.1	0.010 U
MW-16	Nov/Dec 2011	MW-16	NA	NA	5.0 U	0.010 U
MW-16	Jan/Feb 2012	MW-16	NA	NA	5.0 U	0.010 U
MW-16	Jan/Feb 2012	DUPE-7-1Q12	NA	NA	5.0 U	0.010 U
MW-17 Screen 1	Apr/May 2011	MW-17-1	2.0 U	5.000 U	5.0 U	0.010 U
MW-17 Screen 1	Nov/Dec 2011	MW-17-1	NA	NA	5.0 U	0.010 U
MW-17 Screen 2	Apr/May 2011	MW-17-2	2.0 U	5.000 U	5.0 U	0.010 U
MW-17 Screen 2	Aug/Sep 2011	MW-17-2	NA	NA	5.0 U	0.010 U
MW-17 Screen 2	Nov/Dec 2011	MW-17-2	NA	NA	5.0 U	0.010 U
MW-17 Screen 2	Jan/Feb 2012	MW-17-2	NA	NA	5.0 U	0.010 U
MW-17 Screen 3	Apr/May 2011	MW-17-3	2.0 U	5.000 U	5.0 U	0.010 U
MW-17 Screen 3	Aug/Sep 2011	MW-17-3	NA	NA	5.0 U	0.010 U
MW-17 Screen 3	Nov/Dec 2011	MW-17-3	NA	NA	5.0 U	0.010 U
MW-17 Screen 3	Nov/Dec 2011	DUPE-4-4Q11	NA	NA	5.0 U	0.010 U
MW-17 Screen 3	Jan/Feb 2012	MW-17-3	NA	NA	5.0 U	0.010 U
MW-17 Screen 4	Apr/May 2011	MW-17-4	2.0 U	5.000 U	5.0 U	0.010 U
MW-17 Screen 4	Aug/Sep 2011	MW-17-4	NA	NA	5.0 U	0.010 U
MW-17 Screen 4	Nov/Dec 2011	MW-17-4	NA	NA	5.0 U	0.010 U
MW-17 Screen 4	Jan/Feb 2012	MW-17-4	NA	NA	5.0 U	0.010 U
MW-17 Screen 5	Apr/May 2011	MW-17-5	8.1	5.000 U	5.0 U	0.010 U
MW-17 Screen 5	Nov/Dec 2011	MW-17-5	NA	NA	5.0 U	0.010 U
MW-18 Screen 1	Apr/May 2011	MW-18-1	2.0 U	5.000 U	5.0 U	0.010 U
MW-18 Screen 1	Nov/Dec 2011	MW-18-1	NA	NA	5.0 U	0.010 U
MW-18 Screen 2	Apr/May 2011	MW-18-2	2.0 U	5.000 U	5.0 U	0.010 U
MW-18 Screen 2	Aug/Sep 2011	MW-18-2	NA	NA	5.0 U	0.010 U
MW-18 Screen 2	Aug/Sep 2011	DUPE-03-3Q11	NA	NA	5.0 U	0.010 U
MW-18 Screen 2	Nov/Dec 2011	MW-18-2	NA	NA	5.0 U	0.010 U
MW-18 Screen 2	Jan/Feb 2012	MW-18-2	NA	NA	5.0 U	0.010 U
MW-18 Screen 3	Apr/May 2011	MW-18-3	2.0 U	5.000 U	5.0 U	0.010 U
MW-18 Screen 3	Aug/Sep 2011	MW-18-3	NA	NA	5.0 U	0.010 U
MW-18 Screen 3	Nov/Dec 2011	MW-18-3	NA	NA	5.0 U	0.010 U
MW-18 Screen 3	Jan/Feb 2012	MW-18-3	NA	NA	5.0 U	0.010 U
MW-18 Screen 4	Apr/May 2011	MW-18-4	2.0 U	5.000 U	5.0 U	0.010 U
MW-18 Screen 4	Aug/Sep 2011	MW-18-4	NA	NA	5.0 U	0.010 U
MW-18 Screen 4	Nov/Dec 2011	MW-18-4	NA	NA	5.0 U	0.010 U
MW-18 Screen 4	Jan/Feb 2012	MW-18-4	NA	NA	5.0 U	0.010 U

Sample Location	Sampling Event	Sample Number	Arsenic (µg/L)	Lead (µg/L)	Chromium, Total (µg/L)	Chromium, Hexavalent (mg/L)
MW-18 Screen 5	Apr/May 2011	MW-18-5	2.1	5.000 U	5.0 U	0.010 U
MW-18 Screen 5	Nov/Dec 2011	MW-18-5	NA	NA	5.0 U	0.010 U
MW-19 Screen 1	Apr/May 2011	MW-19-1	2.0 U	5.000 U	5.0 U	0.010 U
MW-19 Screen 1	Nov/Dec 2011	MW-19-1	NA	NA	5.0 U	0.010 U
MW-19 Screen 1	Nov/Dec 2011	DUPE-2-4Q11	NA	NA	5.0 U	0.010 U
MW-19 Screen 2	Apr/May 2011	MW-19-2	2.0 U	5.000 U	5.0 U	0.010 U
MW-19 Screen 2	Nov/Dec 2011	MW-19-2	NA	NA	5.0 U	0.010 U
MW-19 Screen 3	Apr/May 2011	MW-19-3	2.0 U	5.000 U	5.0 U	0.010 U
MW-19 Screen 3	Apr/May 2011	DUPE-3-2Q11	2.0 U	5.000 U	5.0 U	0.010 U
MW-19 Screen 3	Nov/Dec 2011	MW-19-3	NA	NA	5.0 U	0.010 U
MW-19 Screen 4	Apr/May 2011	MW-19-4	2.0 U	5.000 U	5.0 U	0.010 U
MW-19 Screen 4	Nov/Dec 2011	MW-19-4	NA	NA	5.0 U	0.010 U
MW-19 Screen 5	Apr/May 2011	MW-19-5	2.0 U	5.000 U	5.0 U	0.010 U
MW-19 Screen 5	Nov/Dec 2011	MW-19-5	NA	NA	5.0 U	0.010 U
MW-20 Screen 1	Apr/May 2011	MW-20-1	2.0 U	5.000 U	5.0 U	0.010 U
MW-20 Screen 1	Aug/Sep 2011	MW-20-1	NA	NA	5.0 U	0.010 U
MW-20 Screen 1	Nov/Dec 2011	MW-20-1	NA	NA	5.0 U	0.010 U
MW-20 Screen 1	Jan/Feb 2012	MW-20-1	NA	NA	5.0 U	0.010 U
MW-20 Screen 2	Apr/May 2011	MW-20-2	2.0 U	5.000 U	5.0 U	0.010 U
MW-20 Screen 2	Aug/Sep 2011	MW-20-2	NA	NA	5.0 U	0.010 U
MW-20 Screen 2	Nov/Dec 2011	MW-20-2	NA	NA	5.0 U	0.010 U
MW-20 Screen 2	Jan/Feb 2012	MW-20-2	NA	NA	5.0 U	0.010 U
MW-20 Screen 3	Apr/May 2011	MW-20-3	2.0 U	5.000 U	5.0 U	0.010 U
MW-20 Screen 3	Aug/Sep 2011	MW-20-3	NA	NA	5.0 U	0.010 U
MW-20 Screen 3	Nov/Dec 2011	MW-20-3	NA	NA	5.0 U	0.010 U
MW-20 Screen 3	Jan/Feb 2012	MW-20-3	NA	NA	5.0 U	0.010 U
MW-20 Screen 4	Apr/May 2011	MW-20-4	2.0 U	5.000 U	5.0 U	0.010 U
MW-20 Screen 4	Apr/May 2011	DUPE-2-2Q11	2.0 U	5.000 U	5.0 U	0.010 U
MW-20 Screen 4	Aug/Sep 2011	MW-20-4	NA	NA	5.0 U	0.010 U
MW-20 Screen 4	Aug/Sep 2011	DUPE-04-3Q11	NA	NA	5.0 U	0.010 U
MW-20 Screen 4	Nov/Dec 2011	MW-20-4	NA	NA	5.0 U	0.010 U
MW-20 Screen 4	Jan/Feb 2012	MW-20-4	NA	NA	5.0 U	0.010 U
MW-20 Screen 5	Apr/May 2011	MW-20-5	2.0 U	5.000 U	5.0 U	0.010 U
MW-20 Screen 5	Aug/Sep 2011	MW-20-5	NA	NA	5.0 U	0.010 U
MW-20 Screen 5	Nov/Dec 2011	MW-20-5	NA	NA	5.0 U	0.010 U
MW-20 Screen 5	Jan/Feb 2012	MW-20-5	NA	NA	5.0 U	0.010 U
MW-21 Screen 1	Apr/May 2011	MW-21-1	2.0 U	5.000 U	5.0 U	0.010 U
MW-21 Screen 1	Aug/Sep 2011	MW-21-1	NA	NA	5.0 U	0.010 U
MW-21 Screen 1	Nov/Dec 2011	MW-21-1	NA	NA	5.0 U	0.010 U
MW-21 Screen 1	Jan/Feb 2012	MW-21-1	NA	NA	5.0 U	0.010 U
MW-21 Screen 2	Apr/May 2011	MW-21-2	2.0 U	5.000 U	5.0 U	0.010 U
MW-21 Screen 2	Aug/Sep 2011	MW-21-2	NA	NA	5.0 U	0.010 U

Sample Location	Sampling Event	Sample Number	Arsenic (µg/L)	Lead (µg/L)	Chromium, Total (µg/L)	Chromium, Hexavalent (mg/L)
MW-21 Screen 2	Nov/Dec 2011	MW-21-2	NA	NA	5.0 U	0.010 U
MW-21 Screen 2	Nov/Dec 2011	DUPE-1-4Q11	NA	NA	5.0 U	0.010 U
MW-21 Screen 2	Jan/Feb 2012	MW-21-2	NA	NA	5.0 U	0.010 U
MW-21 Screen 2	Jan/Feb 2012	DUPE-1-1Q12	NA	NA	5.0 U	0.010 U
MW-21 Screen 3	Apr/May 2011	MW-21-3	2.0 U	5.000 U	5.0 U	0.010 U
MW-21 Screen 3	Aug/Sep 2011	MW-21-3	NA	NA	5.0 U	0.010 U
MW-21 Screen 3	Nov/Dec 2011	MW-21-3	NA	NA	5.0 U	0.010 U
MW-21 Screen 3	Jan/Feb 2012	MW-21-3	NA	NA	5.0 U	0.010 U
MW-21 Screen 4	Apr/May 2011	MW-21-4	2.0 U	5.000 U	5.0 U	0.010 U
MW-21 Screen 4	Aug/Sep 2011	MW-21-4	NA	NA	5.0 U	0.010 U
MW-21 Screen 4	Nov/Dec 2011	MW-21-4	NA	NA	5.0 U	0.010 U
MW-21 Screen 4	Jan/Feb 2012	MW-21-4	NA	NA	5.0 U	0.010 U
MW-21 Screen 5	Apr/May 2011	MW-21-5	2.0 U	5.000 U	5.0 U	0.010 U
MW-21 Screen 5	Aug/Sep 2011	MW-21-5	NA	NA	5.8	0.010 U
MW-21 Screen 5	Nov/Dec 2011	MW-21-5	NA	NA	5.0 U	0.010 U
MW-21 Screen 5	Jan/Feb 2012	MW-21-5	NA	NA	5.0 U	0.010 U
MW-22 Screen 1	Apr/May 2011	MW-22-1	2.0 U	5.000 U	5.0 U	0.010 U
MW-22 Screen 1	Aug/Sep 2011	MW-22-1	NA	NA	5.0 U	0.010 U
MW-22 Screen 1	Nov/Dec 2011	MW-22-1	NA	NA	5.0 U	0.010 U
MW-22 Screen 1	Jan/Feb 2012	MW-22-1	NA	NA	5.0 U	0.010 U
MW-22 Screen 2	Apr/May 2011	MW-22-2	2.0 U	5.000 U	5.0 U	0.010 U
MW-22 Screen 2	Aug/Sep 2011	MW-22-2	NA	NA	5.0 U	0.010 U
MW-22 Screen 2	Nov/Dec 2011	MW-22-2	NA	NA	5.0 U	0.010 U
MW-22 Screen 2	Jan/Feb 2012	MW-22-2	NA	NA	5.0 U	0.010 U
MW-22 Screen 2	Jan/Feb 2012	DUPE-4-1Q12	NA	NA	5.0 U	0.010 U
MW-22 Screen 3	Apr/May 2011	MW-22-3	2.0 U	5.000 U	5.0 U	0.010 U
MW-22 Screen 3	Aug/Sep 2011	MW-22-3	NA	NA	5.0 U	0.010 U
MW-22 Screen 3	Nov/Dec 2011	MW-22-3	NA	NA	5.0 U	0.010 U
MW-22 Screen 3	Jan/Feb 2012	MW-22-3	NA	NA	5.0 U	0.010 U
MW-22 Screen 4	Apr/May 2011	MW-22-4	2.0 U	5.000 U	5.0 U	0.010 U
MW-22 Screen 4	Nov/Dec 2011	MW-22-4	NA	NA	5.0 U	0.010 U
MW-22 Screen 4	Nov/Dec 2011	DUPE-6-4Q11	NA	NA	5.0 U	0.010 U
MW-22 Screen 5	Apr/May 2011	MW-22-5	2.0 U	5.000 U	5.0 U	0.010 U
MW-22 Screen 5	Nov/Dec 2011	MW-22-5	NA	NA	5.0 U	0.010 U
MW-23 Screen 1	Apr/May 2011	MW-23-1	2.0 U	5.000 U	7.6	0.010 U
MW-23 Screen 1	Aug/Sep 2011	MW-23-1	NA	NA	7.2	0.010 U
MW-23 Screen 1	Nov/Dec 2011	MW-23-1	NA	NA	5.0 U	0.010 U
MW-23 Screen 1	Jan/Feb 2012	MW-23-1	NA	NA	5.0 U	0.010 U
MW-23 Screen 1	Jan/Feb 2012	DUPE-3-1Q12	NA	NA	5.0 U	0.010 U
MW-23 Screen 2	Apr/May 2011	MW-23-2	2.0 U	5.000 U	5.0 U	0.010 U
MW-23 Screen 2	Aug/Sep 2011	MW-23-2	NA	NA	5.0 U	0.010 U
MW-23 Screen 2	Nov/Dec 2011	MW-23-2	NA	NA	5.0 U	0.010 U



Sample Location	Sampling Event	Sample Number	Arsenic (µg/L)	Lead (µg/L)	Chromium, Total (µg/L)	Chromium, Hexavalent (mg/L)
MW-23 Screen 2	Jan/Feb 2012	MW-23-2	NA	NA	5.0 U	0.010 U
MW-23 Screen 3	Apr/May 2011	MW-23-3	2.0 U	5.000 U	5.0 U	0.010 U
MW-23 Screen 3	Aug/Sep 2011	MW-23-3	NA	NA	5.0 U	0.010 U
MW-23 Screen 3	Nov/Dec 2011	MW-23-3	NA	NA	5.0 U	0.010 U
MW-23 Screen 3	Jan/Feb 2012	MW-23-3	NA	NA	5.0 U	0.010 U
MW-23 Screen 4	Apr/May 2011	MW-23-4	2.0 U	5.000 U	5.0 U	0.010 U
MW-23 Screen 4	Aug/Sep 2011	MW-23-4	NA	NA	5.0 U	0.010 U
MW-23 Screen 4	Nov/Dec 2011	MW-23-4	NA	NA	5.0 U	0.010 U
MW-23 Screen 4	Jan/Feb 2012	MW-23-4	NA	NA	5.0 U	0.010 U
MW-23 Screen 5	Apr/May 2011	MW-23-5	<b>4.7</b>	5.000 U	5.0 U	0.010 U
MW-23 Screen 5	Nov/Dec 2011	MW-23-5	NA	NA	5.0 U	0.010 U
MW-24 Screen 1	Apr/May 2011	MW-24-1	2.0 U	5.000 U	5.0 U	0.010 U
MW-24 Screen 1	Aug/Sep 2011	MW-24-1	NA	NA	<b>7.9</b>	0.010 U
MW-24 Screen 1	Nov/Dec 2011	MW-24-1	NA	NA	<b>5.8</b>	0.010 U
MW-24 Screen 1	Jan/Feb 2012	MW-24-1	NA	NA	5.0 U	0.010 U
MW-24 Screen 2	Apr/May 2011	MW-24-2	<b>2.1</b>	5.000 U	5.0 U	0.010 U
MW-24 Screen 2	Apr/May 2011	DUPE-1-2Q11	2.0 U	5.000 U	5.0 U	0.010 U
MW-24 Screen 2	Aug/Sep 2011	MW-24-2	NA	NA	5.0 U	0.010 U
MW-24 Screen 2	Nov/Dec 2011	MW-24-2	NA	NA	5.0 U	0.010 U
MW-24 Screen 2	Jan/Feb 2012	MW-24-2	NA	NA	5.0 U	0.010 U
MW-24 Screen 3	Apr/May 2011	MW-24-3	<b>3.0</b>	5.000 U	5.0 U	0.010 U
MW-24 Screen 3	Aug/Sep 2011	MW-24-3	NA	NA	5.0 U	0.010 U
MW-24 Screen 3	Nov/Dec 2011	MW-24-3	NA	NA	5.0 U	0.010 U
MW-24 Screen 3	Nov/Dec 2011	DUPE-7-4Q11	NA	NA	5.0 U	0.010 U
MW-24 Screen 3	Jan/Feb 2012	MW-24-3	NA	NA	5.0 U	0.010 U
MW-24 Screen 4	Apr/May 2011	MW-24-4	2.0 U	5.000 U	5.0 U	0.010 U
MW-24 Screen 4	Aug/Sep 2011	MW-24-4	NA	NA	5.0 U	0.010 U
MW-24 Screen 4	Nov/Dec 2011	MW-24-4	NA	NA	5.0 U	0.010 U
MW-24 Screen 4	Jan/Feb 2012	MW-24-4	NA	NA	5.0 U	0.010 U
MW-24 Screen 5	Apr/May 2011	MW-24-5	2.0 U	5.000 U	5.0 U	0.010 U
MW-24 Screen 5	Nov/Dec 2011	MW-24-5	NA	NA	5.0 U	0.010 U
MW-25 Screen 1	Apr/May 2011	MW-25-1	2.0 U	5.000 U	5.0 U	0.010 U
MW-25 Screen 1	Aug/Sep 2011	MW-25-1	NA	NA	5.0 U	0.010 U
MW-25 Screen 1	Nov/Dec 2011	MW-25-1	NA	NA	5.0 U	0.010 U
MW-25 Screen 1	Jan/Feb 2012	MW-25-1	NA	NA	5.0 U	0.010 U
MW-25 Screen 2	Apr/May 2011	MW-25-2	2.0 U	5.000 U	5.0 U	0.010 U
MW-25 Screen 2	Apr/May 2011	DUPE-4-2Q11	2.0 U	5.000 U	5.0 U	0.010 U
MW-25 Screen 2	Aug/Sep 2011	MW-25-2	NA	NA	5.0 U	0.010 U
MW-25 Screen 2	Aug/Sep 2011	DUPE-05-3Q11	NA	NA	5.0 U	0.010 U
MW-25 Screen 2	Nov/Dec 2011	MW-25-2	NA	NA	5.0 U	0.010 U
MW-25 Screen 2	Jan/Feb 2012	MW-25-2	NA	NA	<b>5.0</b>	0.010 U
MW-25 Screen 3	Apr/May 2011	MW-25-3	2.0 U	5.000 U	5.0 U	0.010 U

Sample Location	Sampling Event	Sample Number	Arsenic (µg/L)	Lead (µg/L)	Chromium, Total (µg/L)	Chromium, Hexavalent (mg/L)
MW-25 Screen 3	Aug/Sep 2011	MW-25-3	NA	NA	5.0 U	0.010 U
MW-25 Screen 3	Nov/Dec 2011	MW-25-3	NA	NA	5.0 U	0.010 U
MW-25 Screen 3	Jan/Feb 2012	MW-25-3	NA	NA	5.1	0.010 U
MW-25 Screen 4	Apr/May 2011	MW-25-4	2.0 U	5.000 U	5.0 U	0.010 U
MW-25 Screen 4	Aug/Sep 2011	MW-25-4	NA	NA	5.0 U	0.010 U
MW-25 Screen 4	Nov/Dec 2011	MW-25-4	NA	NA	5.0 U	0.010 U
MW-25 Screen 4	Jan/Feb 2012	MW-25-4	NA	NA	5.0 U	0.010 U
MW-25 Screen 5	Apr/May 2011	MW-25-5	2.0 U	5.000 U	5.0 U	0.010 U
MW-25 Screen 5	Aug/Sep 2011	MW-25-5	NA	NA	5.0 U	0.010 U
MW-25 Screen 5	Nov/Dec 2011	MW-25-5	NA	NA	5.0 U	0.010 U
MW-25 Screen 5	Jan/Feb 2012	MW-25-5	NA	NA	5.0 U	0.010 U
MW-26 Screen 1	Apr/May 2011	MW-26-1	2.0 U	5.000 U	5.0 U	0.010 U
MW-26 Screen 1	Aug/Sep 2011	MW-26-1	NA	NA	5.0 U	0.010 U
MW-26 Screen 1	Nov/Dec 2011	MW-26-1	NA	NA	5.0 U	0.010 U
MW-26 Screen 1	Jan/Feb 2012	MW-26-1	NA	NA	5.0 U	0.010 U
MW-26 Screen 2	Apr/May 2011	MW-26-2	2.0 U	5.000 U	5.0 U	0.010 U
MW-26 Screen 2	Aug/Sep 2011	MW-26-2	NA	NA	5.0 U	0.010 U
MW-26 Screen 2	Nov/Dec 2011	MW-26-2	NA	NA	5.0 U	0.010 U
MW-26 Screen 2	Jan/Feb 2012	MW-26-2	NA	NA	5.0 U	0.010 U
California Maximum Contaminant Level (MCL)			10	15 *	50	0.05 **
EPA Region IX Maximum Contaminant Level			50	15 *	100	NE

**Notes**

DUPE Field Duplicate

NA Not analyzed

NE Not established

UNK PQL value unknown

\* Interim Action Level - California Department of Health Services

\*\* As of January 6, 2004, hexavalent chromium is regulated under the 50-µg/L MCL for total chromium.

DHS will be adopting an MCL that is specific for hexavalent chromium (DHS, 2004).

As of December 31, 2010, a draft PHG of 0.02 µg/L has been established by Cal/EPA (e.g., Health and Safety Code requirement to establish the MCL); however, the CDPH (formerly DHS) has not established an MCL.

J Analyte concentration is an estimated value

U Analyte was analyzed for but not detected at or above the stated limit

**TABLE 3**  
**SUMMARY OF VOLATILE ORGANIC COMPOUNDS AND PERCHLORATE REPORTED IN**  
**MUNICIPAL PRODUCTION WELLS NEAR JPL DURING LAST FOUR SAMPLING EVENTS OF THE**  
**LONG-TERM QUARTERLY GROUNDWATER SAMPLING PROGRAM**

(All concentrations reported in µg/L.)  
(Shaded values exceed State or Federal MCLs or action levels.)

Purveyor	Well Name	Sample Date	Perchlorate	Carbon Tetrachloride	PCE	TCE
LINCOLN AVENUE WATER CO.	WELL 03	3/15/11	42.0	NA	NA	NA
		3/22/11	38.0	NA	NA	NA
		4/01/11	41.0	NA	NA	NA
		4/05/11	46.0	1.0	0.5	1.5
		7/31/11	22.0	NA	NA	NA
		8/02/11	22.0	0.5 U	0.5 U	0.5 U
		8/04/11	NA	0.5 U	0.5 U	0.5 U
		8/16/11	26.0	NA	NA	NA
		8/23/11	30.0	NA	NA	NA
		8/30/11	34.0	NA	NA	NA
		9/06/11	37.0	0.5 U	0.5 U	0.6
		9/13/11	38.0	NA	NA	NA
		9/20/11	40.0	NA	NA	NA
		9/27/11	44.0	NA	NA	NA
		10/04/11	35.0	1.2	0.5 U	1.3
		10/11/11	36.0	NA	NA	NA
		10/18/11	35.0	NA	NA	NA
		10/25/11	35.0	NA	NA	NA
		11/01/11	35.0	1.1	0.5 U	1.6
		11/08/11	31.0	NA	NA	NA
		11/15/11	35.0	NA	NA	NA
		11/22/11	10.0	NA	NA	NA
		12/06/11	26.0	0.5 U	0.5 U	0.5 U
		12/13/11	24.0	NA	NA	NA
		1/05/12	24.0	0.5 U	0.5 U	0.5 U
		1/11/12	24.0	NA	NA	NA
		1/17/12	26.0	NA	NA	NA
		2/03/12	4.0 U	0.5 U	0.5 U	0.5 U
	2/14/12	18.0	NA	NA	NA	
	WELL 05	3/11/11	21.0	2.1	1.3	4.9
		3/23/11	NA	2.2	0.9	3.1
		4/01/11	36.0	3.5	1.0	3.9
		4/12/11	32.0	NA	NA	NA
		7/07/11	44.0	4.1	1.1	4.0
7/12/11		37.0	NA	NA	NA	
7/19/11		35.0	NA	NA	NA	
7/26/11		33.0	NA	NA	NA	
8/02/11		31.0	3.2	0.8	3.2	
8/09/11		30.0	NA	NA	NA	
8/16/11		29.0	NA	NA	NA	
8/23/11		29.0	NA	NA	NA	
8/30/11	29.0	NA	NA	NA		
9/06/11	30.0	2.3	0.7	2.4		

Purveyor	Well Name	Sample Date	Perchlorate	Carbon Tetrachloride	PCE	TCE
LINCOLN AVENUE WATER CO. (con't)	WELL 05 (con't)	11/18/11	31.0	2.4	0.5	2.1
		11/22/11	30.0	NA	NA	NA
		11/29/11	30.0	NA	NA	NA
		12/06/11	29.0	2.4	0.7	3.0
		12/13/11	29.0	NA	NA	NA
		12/20/11	32.0	NA	NA	NA
		12/27/11	30.0	NA	NA	NA
		1/03/12	30.0	2.3	0.6	2.3
		1/10/12	29.0	NA	NA	NA
		1/17/12	29.0	NA	NA	NA
		1/24/12	27.0	NA	NA	NA
		1/31/12	28.0	NA	NA	NA
		2/06/12	NA	2.8	0.7	2.4
		2/07/12	27.0	2.4	0.7	2.3
		2/14/12	27.0	NA	NA	NA
RUBIO CANON LAND & WATER ASSOCIATION	WELL 04	3/14/11	4.0 U	NA	NA	NA
		3/16/11	4.0 U	NA	NA	NA
		3/21/11	4.0 U	NA	NA	NA
		3/22/11	4.0 U	NA	NA	NA
		3/23/11	4.0 U	NA	NA	NA
		3/24/11	4.0 U	NA	NA	NA
		3/28/11	4.0 U	NA	NA	NA
		3/30/11	4.0 U	NA	NA	NA
		4/04/11	4.0 U	NA	NA	NA
		4/11/11	4.0 U	NA	NA	NA
		4/18/11	4.0 U	NA	NA	NA
		4/25/11	4.0 U	NA	NA	NA
		5/23/11	4.0 U	NA	NA	NA
		5/31/11	4.0 U	NA	NA	NA
		6/06/11	4.0 U	NA	NA	NA
		6/13/11	4.0 U	NA	NA	NA
		6/20/11	4.0 U	NA	NA	NA
		6/27/11	4.0 U	NA	NA	NA
		7/05/11	4.0 U	NA	NA	NA
		7/11/11	4.0 U	NA	NA	NA
		7/18/11	4.0 U	NA	NA	NA
		7/25/11	4.0 U	NA	NA	NA
		8/01/11	4.0 U	NA	NA	NA
		8/08/11	4.0 U	NA	NA	NA
		8/15/11	4.0 U	NA	NA	NA
		8/22/11	4.0 U	NA	NA	NA
		8/29/11	4.0 U	NA	NA	NA
		9/06/11	4.0 U	NA	NA	NA
		9/12/11	4.0 U	NA	NA	NA
	9/19/11	4.0 U	NA	NA	NA	
	10/03/11	4.0 U	NA	NA	NA	
	10/10/11	4.0 U	0.5 U	0.5 U	0.5 U	
	WELL 07	WELL 07	3/14/11	4.0 U	NA	NA
3/16/11			4.0 U	NA	NA	NA
3/21/11			4.0 U	NA	NA	NA

Purveyor	Well Name	Sample Date	Perchlorate	Carbon Tetrachloride	PCE	TCE
RUBIO CANON LAND & WATER ASSOCIATION (con't)	WELL 07 (con't)	3/22/11	4.0 U	NA	NA	NA
		3/23/11	4.0 U	NA	NA	NA
		3/24/11	4.0 U	NA	NA	NA
		3/28/11	4.0 U	NA	NA	NA
		3/30/11	4.0 U	NA	NA	NA
		4/04/11	4.0 U	NA	0.6	NA
		4/11/11	4.0 U	NA	NA	NA
		4/18/11	4.0 U	NA	NA	NA
		4/25/11	4.0 U	NA	NA	NA
		5/23/11	4.0 U	NA	NA	NA
		5/31/11	4.0 U	NA	NA	NA
		6/06/11	4.0 U	NA	NA	NA
		6/13/11	4.0 U	NA	NA	NA
		6/20/11	4.0 U	NA	NA	NA
		6/27/11	4.0 U	NA	NA	NA
		7/05/11	4.0 U	NA	0.5 U	NA
		7/11/11	4.0 U	NA	NA	NA
		7/18/11	4.0 U	NA	NA	NA
		7/25/11	4.0 U	NA	NA	NA
		8/01/11	4.0 U	NA	NA	NA
		8/08/11	4.0 U	NA	NA	NA
		8/15/11	4.0 U	NA	NA	NA
		8/22/11	4.0 U	NA	NA	NA
		8/29/11	4.0 U	NA	NA	NA
		9/06/11	4.0 U	NA	NA	NA
		9/12/11	4.0 U	NA	NA	NA
		9/19/11	4.0 U	NA	NA	NA
		9/26/11	4.0 U	NA	NA	NA
		10/03/11	4.0 U	NA	0.5 U	NA
		10/10/11	4.0 U	0.5 U	0.5 U	0.5 U
		10/17/11	4.0 U	NA	NA	NA
		10/24/11	4.0 U	NA	NA	NA
		10/31/11	4.0 U	NA	NA	NA
		11/07/11	4.0 U	NA	NA	NA
		11/14/11	4.0 U	NA	NA	NA
		11/21/11	4.0 U	NA	NA	NA
		11/28/11	4.0 U	NA	NA	NA
		12/05/11	4.0 U	NA	NA	NA
12/12/11	4.0 U	NA	NA	NA		
12/19/11	4.0 U	NA	NA	NA		
12/27/11	4.0 U	NA	NA	NA		
1/03/12	4.0 U	NA	0.5 U	NA		
1/09/12	4.0 U	NA	NA	NA		
1/17/12	4.0 U	NA	NA	NA		
1/23/12	4.0 U	NA	NA	NA		
1/30/12	4.0 U	NA	NA	NA		
2/06/12	4.0 U	0.5 U	0.5 U	0.5 U		
2/13/12	4.0 U	NA	NA	NA		
LAS FLORES WATER CO.	WELL 02	3/14/11	5.1	NA	0.5 U	NA
		3/28/11	6.6	NA	0.5 U	NA

Purveyor	Well Name	Sample Date	Perchlorate	Carbon Tetrachloride	PCE	TCE
LAS FLORES WATER CO. (con't)	WELL 02 (con't)	4/04/11	9.6	NA	0.5 U	NA
		4/11/11	7.0	NA	0.5 U	NA
		4/18/11	7.1	NA	0.5 U	NA
		4/25/11	7.1	NA	0.5 U	NA
		5/23/11	6.0	NA	0.5 U	NA
		5/31/11	7.4	NA	0.5 U	NA
		6/06/11	8.5	NA	0.5 U	NA
		6/13/11	7.1	NA	0.5 U	NA
		6/20/11	7.7	NA	0.5 U	NA
		6/27/11	6.9	NA	0.5 U	NA
		7/05/11	7.0	NA	0.5 U	NA
		7/11/11	6.3	NA	0.5 U	NA
		7/18/11	6.0	NA	0.5 U	NA
		7/25/11	5.5	NA	0.5 U	NA
		8/01/11	5.7	0.5 U	0.5 U	0.5 U
		8/08/11	5.4	NA	0.5 U	NA
		8/15/11	6.4	NA	0.5 U	NA
		8/22/11	7.6	NA	0.5 U	NA
		8/29/11	5.9	NA	0.5 U	NA
		9/06/11	6.6	NA	0.5 U	NA
		9/12/11	6.2	NA	0.5 U	NA
		9/19/11	7.0	NA	0.5 U	NA
		9/26/11	6.1	NA	0.5 U	NA
		10/03/11	5.4	NA	0.5 U	NA
		10/10/11	7.1	NA	0.5 U	NA
		10/17/11	5.7	NA	0.5 U	NA
		10/24/11	5.6	NA	0.5 U	NA
		10/31/11	5.6	NA	0.5	NA
		11/07/11	5.4	NA	0.5 U	NA
		11/14/11	6.0	NA	0.5 U	NA
		11/21/11	5.7	NA	0.5 U	NA
		11/28/11	5.6	NA	0.5 U	NA
		12/05/11	5.7	NA	0.5 U	NA
12/12/11	5.7	NA	0.5 U	NA		
12/19/11	5.1	NA	0.5 U	NA		
12/27/11	5.6	NA	0.6	NA		
1/03/12	6.0	NA	0.5 U	NA		
1/09/12	6.1	NA	0.5	NA		
1/16/12	5.5	NA	0.6	NA		
1/23/12	4.9	NA	0.5	NA		
1/30/12	4.6	NA	0.5	NA		
2/06/12	4.8	NA	0.6	NA		
2/13/12	5.0	NA	0.5 U	NA		
LA CANADA IRRIGATION DIST.	WELL 01	3/15/11	NA	0.5 U	0.6	1.9
		5/23/11	4.0 U	NA	NA	NA
		6/13/11	NA	NA	0.8	1.7
		8/22/11	4.3	NA	NA	NA
		9/19/11	NA	NA	0.6	1.2
	WELL 06	3/21/11	NA	NA	0.5 U	0.5
		6/27/11	NA	NA	0.5 U	0.5 U

Purveyor	Well Name	Sample Date	Perchlorate	Carbon Tetrachloride	PCE	TCE
LA CANADA IRRIGATION DIST. (con't)	WELL 06 (con't)	9/26/11	5.5	NA	0.5 U	0.6
		12/05/11	NA	0.5 U	0.5 U	0.6
VALLEY WATER CO.	WELL 01	5/11/11	4.9	NA	NA	NA
		6/03/11	4.0 U	0.5 U	2.0	0.6
		7/06/11	4.0 U	0.5 U	2.2	1.0
		8/03/11	4.0 U	0.5 U	1.9	0.6
	WELL 02	3/18/11	4.0 U	0.5 U	0.5 U	0.5 U
		5/11/11	4.0 U	NA	NA	NA
		6/03/11	4.0 U	0.5 U	4.0	0.5
		7/06/11	4.0 U	0.5 U	5.9	0.7
		8/03/11	4.0 U	0.5 U	4.8	0.6
		9/06/11	NA	0.5 U	2.4	0.9
		9/09/11	4.2	NA	NA	NA
		10/03/11	4.5	0.5 U	2.1	1.1
	WELL 03	11/01/11	5.1	0.5 U	2.0	1.0
		5/11/11	4.6	NA	NA	NA
		6/03/11	4.0 U	0.5 U	1.4	0.6
		7/06/11	4.0 U	0.5 U	1.6	0.6
	WELL 04	8/03/11	4.0 U	0.5 U	1.1	0.5 U
		5/11/11	4.0 U	NA	NA	NA
		6/03/11	4.0 U	0.5 U	1.5	1.4
		7/06/11	4.0 U	0.5 U	1.7	1.5
PASADENA-CITY, WATER DEPT.	ARROYO	8/03/11	4.0 U	0.5 U	1.8	1.5
		3/22/11	76.4	0.7	0.6	1.1
		3/29/11	77.8	0.6	0.6	0.9
		7/07/11	108.0	0.9	0.6	0.9
		7/12/11	75.3	1.1	0.5	0.8
		7/19/11	79.5	1.5	0.5	0.8
		7/26/11	79.5	1.7	0.5	0.8
		8/02/11	77.4	2.1	0.6	0.8
		8/09/11	81.6	2.2	0.5	0.8
		8/16/11	78.2	2.6	0.6	0.8
		8/17/11	76.4	NA	NA	NA
		8/23/11	80.1	2.8	0.5	0.8
		8/30/11	76.5	2.6	0.5	0.8
		9/06/11	77.9	3.1	0.5	0.8
		9/13/11	66.8	3.1	0.5	0.8
		9/20/11	70.3	3.1	0.5	0.8
		9/27/11	58.7	3.0	0.5	0.8
		10/04/11	57.0	2.8	0.5 U	0.5 U
		10/11/11	61.7	2.5	0.5 U	0.8
		10/18/11	57.8	2.8	0.5	0.9
10/25/11	60.2	2.8	0.6	0.9		
11/01/11	59.2	3.0	0.6	0.9		
11/08/11	55.5	2.7	0.5	0.8		
11/15/11	53.5	3.1	0.6	0.9		
11/22/11	55.8	3.0	0.6	0.9		
11/29/11	52.9	2.9	0.5	0.9		
12/06/11	52.4	2.8	0.5 U	0.8		
12/13/11	50.6	2.8	0.5	0.8		

Purveyor	Well Name	Sample Date	Perchlorate	Carbon Tetrachloride	PCE	TCE
PASADENA-CITY, WATER DEPT. (con't)	ARROYO (con't)	12/20/11	53.3	2.9	0.5	0.8
		12/27/11	46.9	2.7	0.5 U	0.8
		1/03/12	47.9	2.8	0.5 U	0.8
		1/10/12	50.3	2.6	0.5 U	0.8
		1/17/12	46.5	3.9	0.6	0.9
		1/24/12	51.1	2.7	0.5 U	0.8
		1/31/12	46.1	2.7	0.5 U	0.8
		2/07/12	45.2	3.6	0.5 U	0.6
	2/15/12	41.2	3.5	0.5 U	0.8	
	VENTURA	10/11/11	5.9	0.5 U	0.9	2.7
		10/18/11	4.5	0.5 U	0.9	2.4
		10/25/11	5.1	0.5 U	1.0	2.4
		11/01/11	5.4	0.5 U	1.0	2.5
		11/08/11	4.7	0.5 U	0.9	2.2
		11/15/11	4.4	0.5 U	1.0	2.5
		11/22/11	5.1	0.5 U	0.9	2.6
		11/29/11	5.0	0.5 U	0.9	2.5
		12/06/11	5.4	0.5 U	0.8	2.4
		12/13/11	5.2	0.5 U	0.9	2.4
		12/20/11	5.4	0.5 U	0.9	2.5
		12/27/11	4.8	0.5 U	0.9	2.4
		1/03/12	4.6	0.5 U	0.8	2.2
		1/10/12	5.0	0.5 U	0.8	2.3
		1/17/12	4.9	0.5 U	0.9	2.4
		1/24/12	5.2	0.5 U	0.8	2.4
		1/31/12	4.6	0.5 U	0.9	2.5
		2/07/12	4.6	0.5 U	0.8	2.6
	2/15/12	4.5	0.5 U	0.9	2.4	
	WELL 52	3/22/11	15.8	0.5 U	0.8	0.9
3/29/11		16.8	0.5 U	0.6	0.7	
California Maximum Contaminant Level (MCL)			6.0 *	0.5	5.0	5.0
EPA Region IX Maximum Contaminant Level			NE	5.0	5.0	5.0

**Notes**

- NA Not analyzed
- NE Not established
- \* Interim Action Level - California Department of Public Health
- Source California Department of Public Health Drinking Water Program, California Drinking Water Data, January 4, 2005
- U Indicates the compound or analyte was analyzed for but not detected at or above the stated limit.



**TABLE 4**  
**TENTATIVELY IDENTIFIED COMPOUNDS**  
**IN SAMPLES COLLECTED DURING THE JAN/FEB 2012 SAMPLING EVENT**  
(All concentrations reported in µg/L.)

<b>Sampling Location</b>	<b>Sample Type</b>	<b>Tentatively Identified Compound</b>	<b>Concentration</b>
MW-20-5	NORMAL	Carbon disulfide	2.2